

PART 1 GENERAL

1.01 SECTION INCLUDES

- A. Manual Roller Shades and Hardware

1.02 SYSTEM DESCRIPTION

- A. Clutch operated roller shades with bead chain controls

1.03 SUBMITTALS

- A. Product data: Submit five copies of manufactures technical data and installation instructions.
- B. Samples: Submit three samples of each shade cloth with complete color swatch.
- C. Shop Drawings: Submit drawing of mechanical product with appropriate dimensions.

1.04 QUALITY ASSURANCE

- A. The manufacturer of these products shall show a minimum of 10 years of documented experience.
- B. A qualified installer or sub-contractor shall complete the installation.

1.05 DELIVERY, STORAGE AND HANDLING

- A. Deliver products to job site in manufacture's original packaging.
- B. Handle and store products to prevent damage of materials, operating mechanisms, and finishes.

1.06 JOB CONDITIONS

- A. Prior to installation ensure building is completely enclosed, and wet work is complete.

1.07 WARRANTY

- A. Provide manufacture's standard 10 year warranty against defects in manual shade material and workmanship, beginning at date of substantial completion.

PART 2 PRODUCTS

2.01 MANUFACTURES

- A. ACACIA COPORATION
7 Crawford Street
McKees Rocks, PA 15136
Phone (800) 898-5912, Fax (412) 771-3828

2.02 MATERIALS

- A. **Shade Fabric:** Shade fabric shall be selected from a large selection of vinyl coated fiberglass woven into various openness factors and colors. Woven yarn will be interlocking and heat-treated so that all materials are securely bounded. This vinyl compound is specially formulated to withstand fading, fire, mildew, soiling, and wear and tear.
- B. **Shade Materials:**
 1. *Vinyl coated fiberglass fabrics* (E-Screen, OF 5% & 10%; T-Screen, OF 3%, 5% & 10%; M-Screen, OF 3% & 5%)
 2. *Room darken fabrics* fiberglass fabrics with acrylic flocked backing (Obion 11203)
 3. *Mermet Blackout fabrics* fiberglass fabrics with acrylic flocked backing (Flocke 11201)
 4. *Vinyl Blackout fabrics* (Acacia 1000) shall be totally opaque PVC coated fiberglass, with 64 threads per square inch. Breaking strength will be 130 x 120 pounds and weight of 14 ounces per square yard. Fabric must be made of first quality materials with no pinholes, breaks or cracks. Shade fabric must be fire retardant, washable and colorfast

SPECIFICATIONS

- C. Clutch Mechanism:** Shall be made in corrosion resistant plastic and internal mechanisms of Nylon 6 Construction. Shall also consist of a heavy-duty single spring that creates a positive mechanical relationship between the roller shade tube unit and the universal installation brackets to ensure stationary positioning in the static state. When activated the wrap spring releases and permits the clutch to turn while reducing friction on the clutch.
1. *Clutch End Locking System:* The clutch shall have a patented, "Safety First" locking system, which prevents the shade from coming out of its brackets if the shade is operated incorrectly.
 2. *Spring Loaded Idle End Cap:* The idle end of the clutch shall be spring loaded for ease of installation and security of fixing.
- D. Tube Mechanism:** All tubes shall be 100% extruded aluminum with a wall thickness of 0.062". Four tube extrusions shall be used depending upon the size of the shade and the weight of the fabric selected. Each tube shall have at least one Secure Gripe Spline fabric fixing slot to increase the rigidity of the tube, thus enabling shades to span wider openings without the risk of the tube sagging when the shade is operated.
1. *1 1/4" Tube:* Shall have an outside diameter of 1 1/4" and shall be extrude with one slot for increased strengthening and fabric attachment using the Secure Grip Method.
 2. *1 5/8" Tube:* Shall have an outside diameter of 1 3/8" and shall be extrude with two slots for increased strengthening and fabric attachment using the Secure Grip Method.
 3. *1 3/4" Tube:* Shall have an outside diameter of 1 3/4" and shall be extruded with three slots for increased strengthening and fabric attachment using the Secure Grip Method.
 4. *2" Tube:* Shall have an outside diameter of 2.30" and shall be extruded with six slots for increased strengthening and fabric attachment using the Secure Grip Method.
- E. Secure Grip Spline Mounting System:** Spline shall be flexible PVC extrusion to be RF welded to the shade fabric. The spline shall be inserted into a slot on the extruded aluminum tube allowing the fabric to be easily removed and re-installed on the roller tube- taping or stapling of the fabric to the tube is not acceptable.
- F. Hembar:** Shall be an aluminum extrusion 1" high held inside fabric bottom-pocket. The pocket shall be created by folding a 1 1/4" section of fabric behind the bottom of the shade and RF welding the fabric to itself- conventional stitching is not acceptable.
- G. Universal Mounting Brackets:** Shall operate with the patented "Safety-First" end cap locking system and shall be universal. Brackets may be installed inside, outside, or to the ceiling, and can be used for shades with both left and right hand controls. Brackets are .060" steel and shall be available in white or black painted finish.
1. *1 1/4" Tube Mounting Brackets:* Shall have a height of 1 15/16" and a projection of 2 1/2".
 2. *1 5/8" Tube Mounting Brackets:* Shall have a height of 2 15/16" and a projection of 2 11/16".
 3. *1 3/4" Tube Mounting Brackets:* Shall have a height of 3 1/4" and a projection of 3 3/16".
- H. Valance/Fascia Options:**
1. *Aluminum Fascia Valance:* If specified. An aluminum fascia may be attached to conceal the roller shade tube mechanism. It shall be an "L" shape and shall have a wall thickness of .070 inches. It is available in a variety of painted finishes. The fascia shall be set to the universal fascia mounting brackets by snapping it into place on a hinge rib clip. This provides for additional strength and secure fixing. Fascia mounting brackets support the roller shade tube and the fascia panel
 2. *Box Enclosure Valance:* If specified, this two-piece aluminum extrusion shall encase and conceal the roller shade tube mechanism. It is engineered to eliminate top light gap. Aluminum end caps fix at both ends of the extrusion. The box is available in a variety of painted finishes.
 3. *Inserted Fabric Valance:* If specified, a 3 1/2" cut of the shade fabric selected shall be inserted into an extruded PVC valance channel.

- I. **Sill and Side Channels:** (optional) Shades are available with one-piece 2" extruded aluminum, sill and side channels to eliminate left /right side and bottom light gaps.
 - J. **Control Chain:** Standard chain shall be #10 plastic bead chain. If specified #10 nickel-plated steel or #10 stainless steel bead chain is available.
 - K. **Colors and Finishes:** Aluminum extrusions available in (W) white, (BZ) Bronze, and (AZ) anodized aluminum. Custom colors available upon request.
 - L. **General:** The shades shall be free of sharp edges, burs or other defects, which might be harmful. When other materials resulting in improved specifications, they may be adopted.
 - M. **Fabrication:** Prior to fabrication, verify actual opening dimensions by on-site measurements. Calculate shade dimensions to fit within specified tolerances. Shades shall be fabricated to fill openings from head to sill and jamb to jamb. Locate shade divisions at mullions.
- 2.03 RESPONSIBILITY**
- A. Shade manufacturer shall furnish all shades and accessories for a complete installation and single source responsibility.

PART 3 EXECUTION

3.01 INSPECTION AND PREPERATION

- A. Shade installer shall be responsible for inspection of site, approval of mounting surfaces, installation conditions and field measurements prior to shade installation

3.02 INSTALLATION

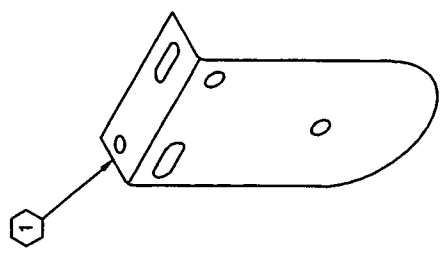
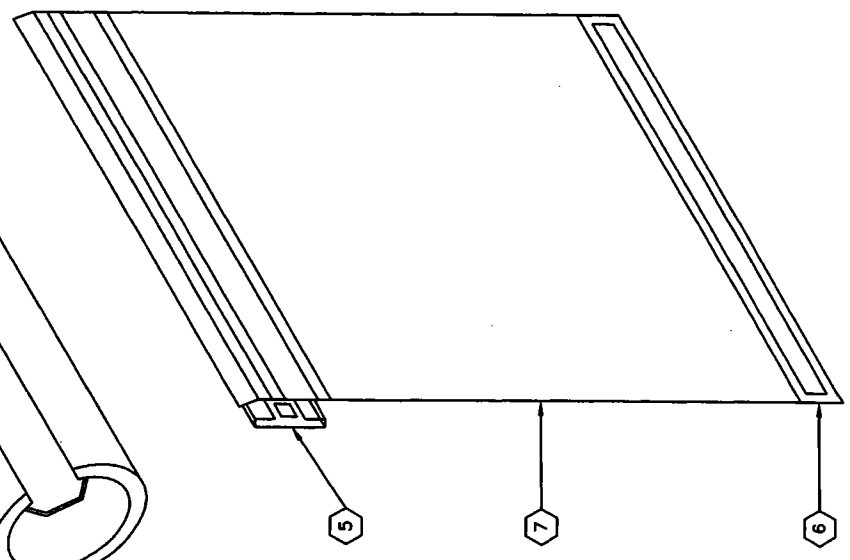
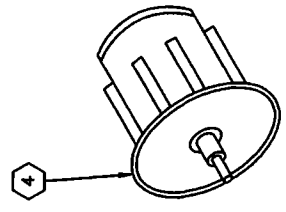
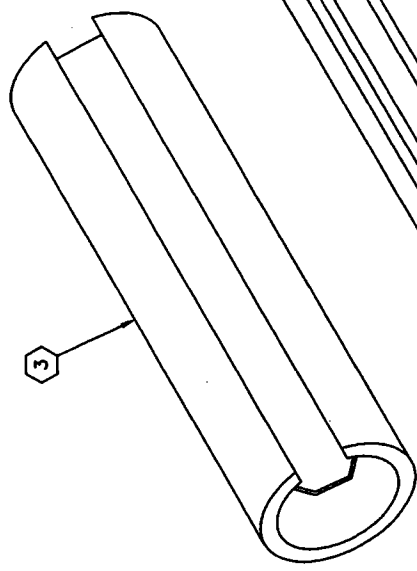
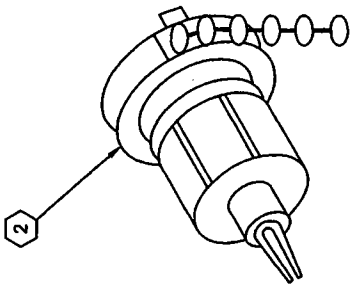
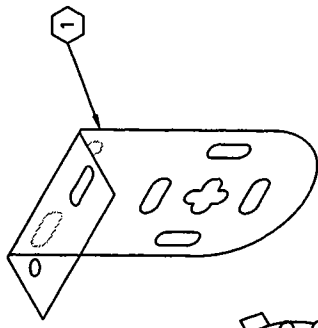
- A. Install shades in accordance with manufacturer's procedures except as otherwise specified herein.
- B. Install shade with adequate clearance to permit smooth operation of shades and any sash operators.
- C. Demonstrate shades to be in smooth, uniform working order.

3.02 CLEANING

- A. Clean soiled shades surfaces with a mild soap solution. Do not use steam, hot water, bleach or any abrasive or solvent-based cleaners. Do not machine wash.
- B. To ensure proper drying, provide adequate ventilation for shades.

3.03 WARRANTY

- A. Provide manufacture's standard 10 year warranty against defects in manual shade material and workmanship, beginning at date of substantial completion.



PARTS LIST	
ITEM	DESCRIPTION
1	BRACKETS
2	CLUTCH MECHANISM
3	EXTRUDED ALUMINUM TUBE
4	SPRING LOADED IDLE END CAP
5	SECURE GRIP SPLINE
6	RF WELDED BOTTOM POCKET
7	SHADE BAND

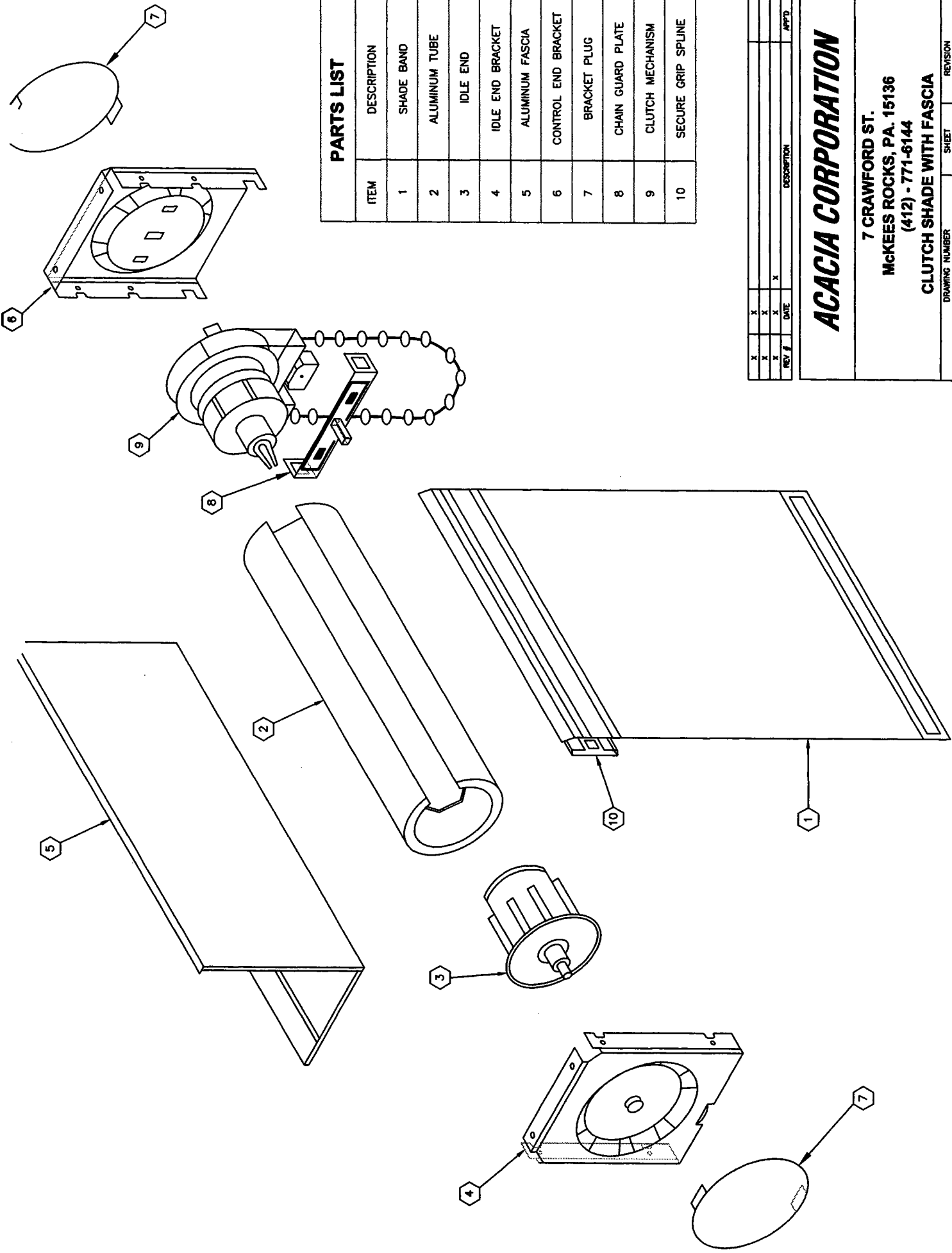
REV #	DATE	DESCRIPTION	APP'D
X			
X			
X			
X			

ACACIA CORPORATION

7 CRAWFORD ST.
 MCKEES ROCKS, PA. 15136
 (412) - 771-6144

MANUAL CLUTCH SHADE

DRAWING NUMBER **CS-1** SHEET 1 OF 1 REVISION X



PARTS LIST

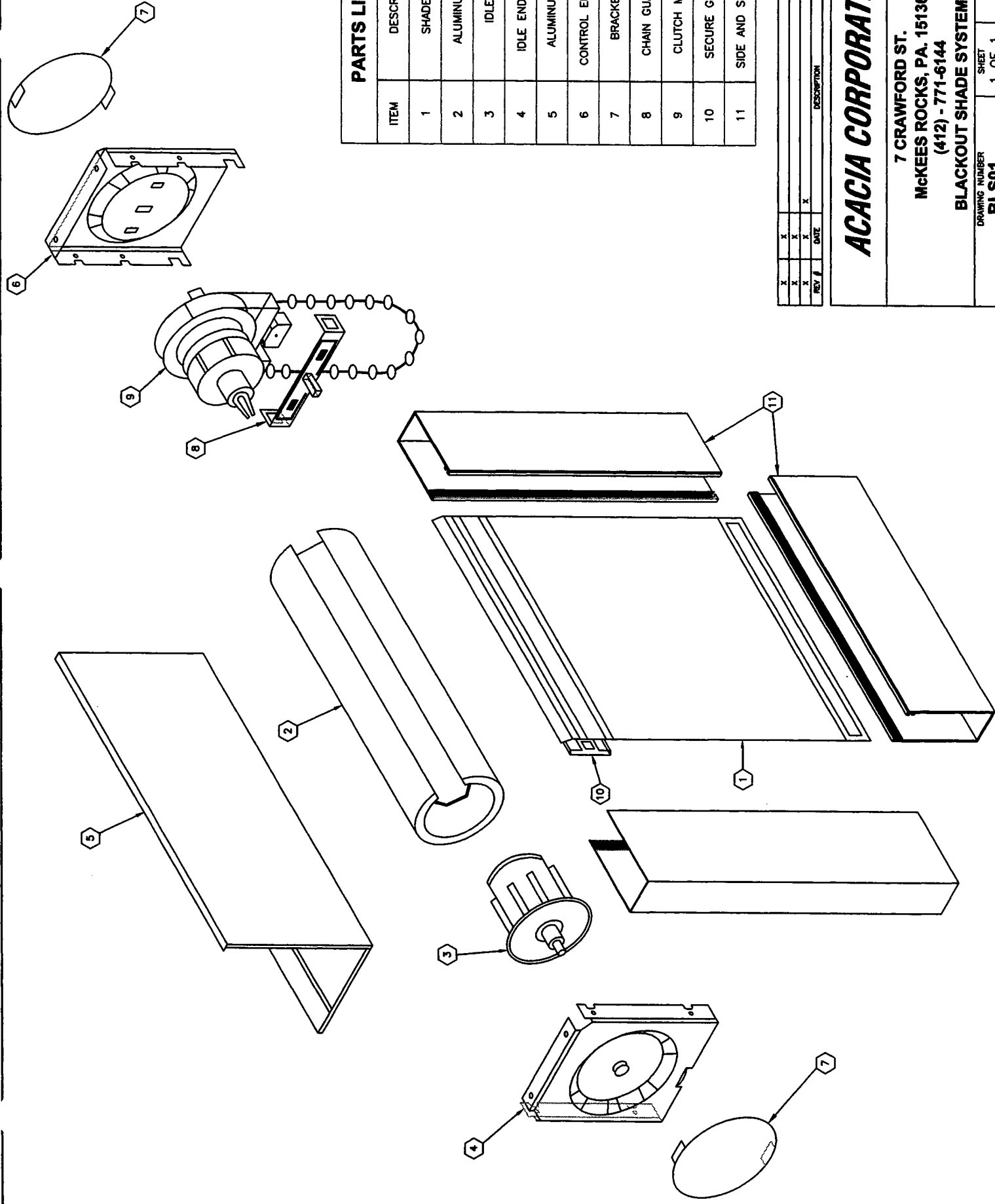
ITEM	DESCRIPTION
1	SHADE BAND
2	ALUMINUM TUBE
3	IDLE END
4	IDLE END BRACKET
5	ALUMINUM FASCIA
6	CONTROL END BRACKET
7	BRACKET PLUG
8	CHAIN GUARD PLATE
9	CLUTCH MECHANISM
10	SECURE GRIP SPLINE

REV #	DATE	DESCRIPTION	APP'D
X			
X			
X			
X			

ACACIA CORPORATION

7 CRAWFORD ST.
 MCKEES ROCKS, PA. 15136
 (412) - 771-6144

CLUTCH SHADE WITH FASCIA
 DRAWING NUMBER CSF01
 SHEET 1 OF 1
 REVISION X



PARTS LIST

ITEM	DESCRIPTION
1	SHADE BAND
2	ALUMINUM TUBE
3	IDLE END
4	IDLE END BRACKET
5	ALUMINUM FASCIA
6	CONTROL END BRACKET
7	BRACKET PLUG
8	CHAIN GUARD PLATE
9	CLUTCH MECHANISM
10	SECURE GRIP SPLINE
11	SIDE AND SILL CHANNEL

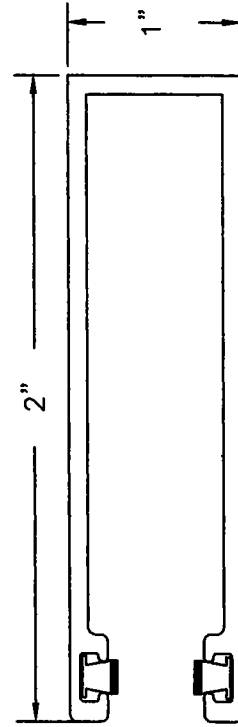
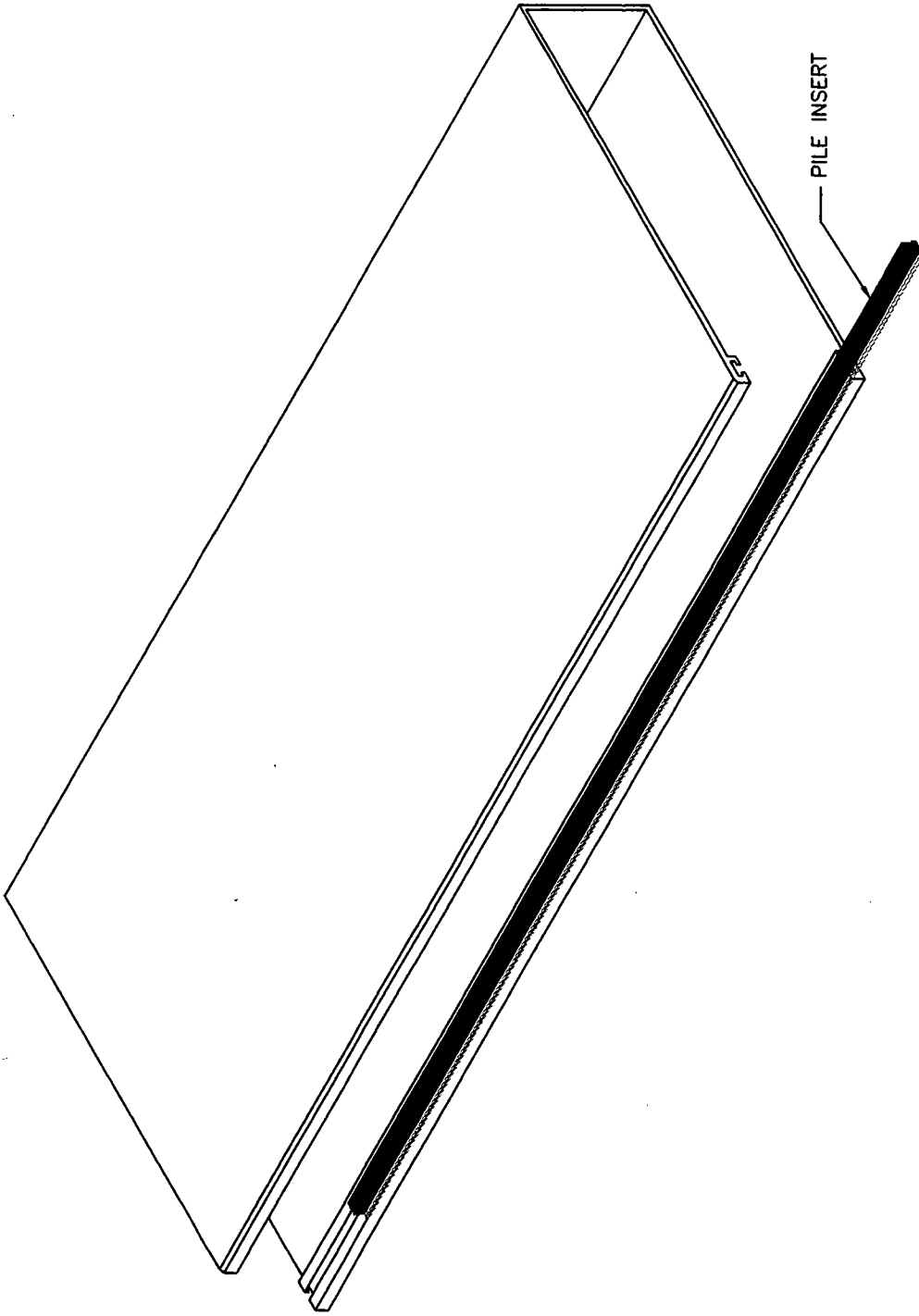
REV #	DATE	DESCRIPTION	APPRO
X			
X			
X			
X			

ACACIA CORPORATION

7 CRAWFORD ST.
 McKEES ROCKS, PA. 15136
 (412) - 771-6144

BLACKOUT SHADE SYSTEM

DRAWING NUMBER: **BLS01** SHEET: 1 OF 1 REVISION: X



SIDE VIEW

REV #	DATE	DESCRIPTION	APP'D
X			
X			
X			
X			

ACACIA CORPORATION

7 CRAWFORD ST.
 MCKEES ROCKS, PA. 15136
 (412) - 771-6144

SIDE AND SILL CHANNEL

DRAWING NUMBER
S&S01

SHEET
 1 OF 1

REVISION
 X