

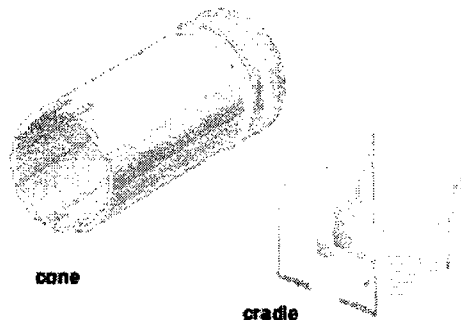


CTS40

DESCRIPTION

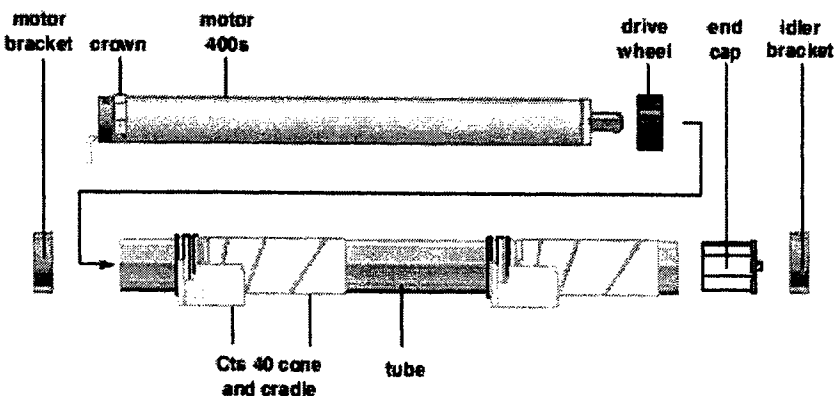
The patented Cord Take-Up System (CTS) for Horizontal Blinds, enables the lift and tilt functions and prevents cord slippage, tangling and overlap. By using the Cord Take-Up System versus a tape, you achieve increased product reliability, smoother and more uniform operation and

eliminate unsightly tapes that don't match horizontal blind colors. What's more, manufacturing and assembling horizontal blinds with cords is an easier process.



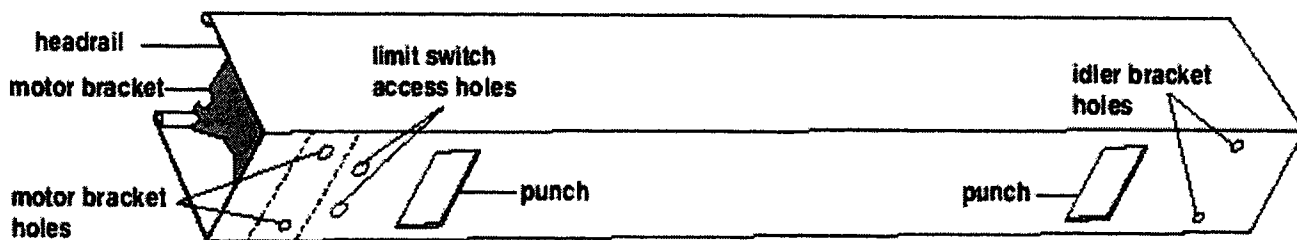
COMPONENTS

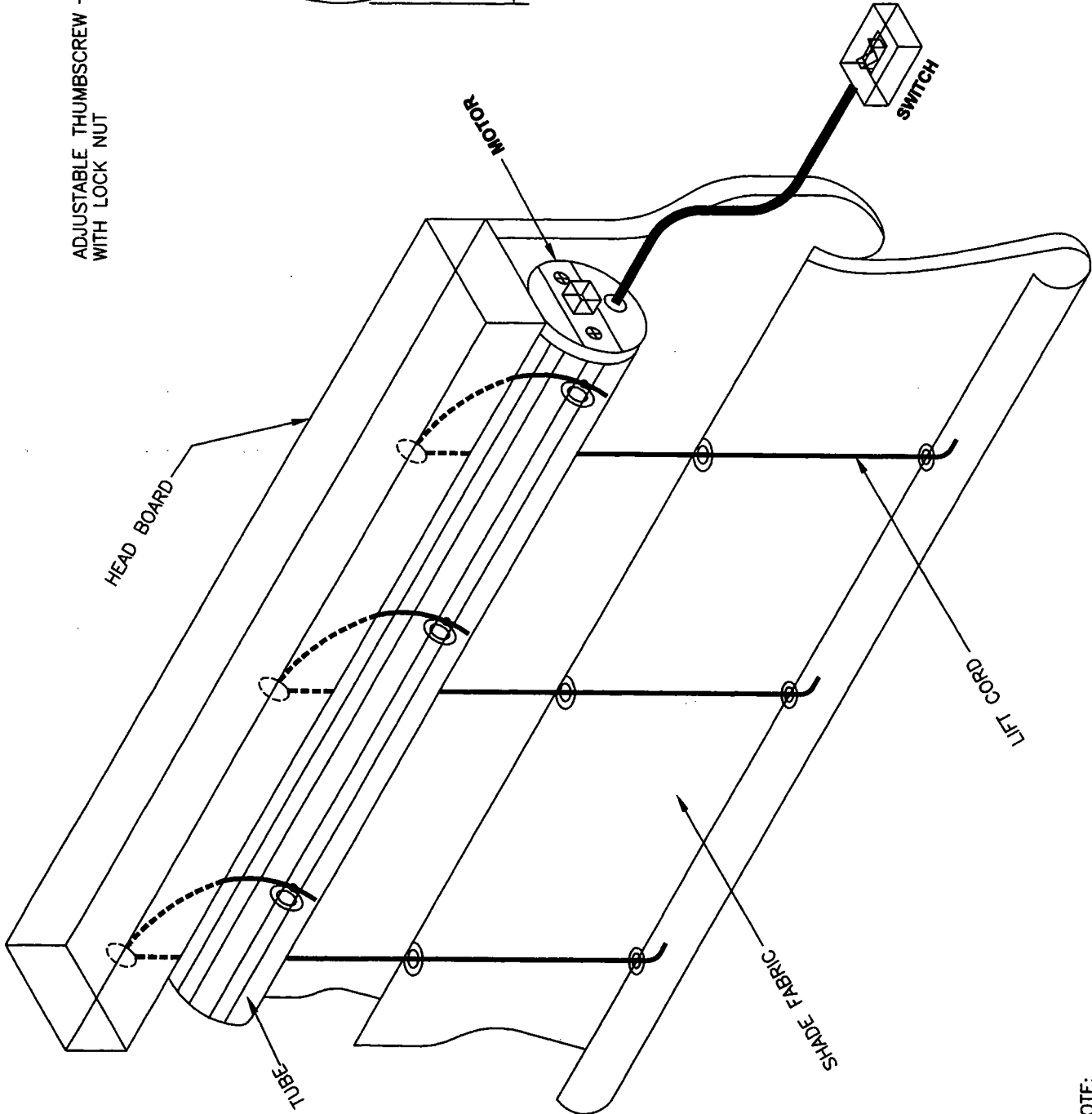
- Motor 400's
- Octagonal Crown and Drive Kit
- Motor/Idler Brackets x (2)
- Tube 40mm Octagonal
- End Cap 40mm Octagonal
- CTS 40 Cone and Cradle Kit



RECOMMENDED HEADRAIL:

57mm x 51mm
Hunter Douglas, Perma Turnils, Graber etc...





ADJUSTABLE THUMBSCREW WITH LOCK NUT

EYELET SCREW

HEAD BOARD

ROLL

2.3" TUBE

MOTOR

SWITCH

HEAD BOARD

TUBE

SHADE FABRIC

LIFT CORD

NOTE:

POSITION EYELET SCREW AT THE FRONT OF THE HEADBOARD BEHIND SHADE FABRIC, THREAD CORD THROUGH EYELET AND FASTEN TO ADJUSTABLE THUMBSCREW ON THE ROLLER, BE SURE TO POSITION THE ADJUSTABLE THUMBSCREW 2 1/2" O.C. TO THE LEFT OR RIGHT OF THE EYELET.

REV #	DATE	DESCRIPTION	APP'D
X			
X			
X			
X			

ACACIA CORPORATION

7 CRAWFORD ST.
 MCKEES ROCKS, PA. 15136
 (412) - 771-6144

MOTORIZED ROMAN STYLE SHADE

DRAWING NUMBER
MRS01

SHEET
 1 OF 1

REVISION
 X