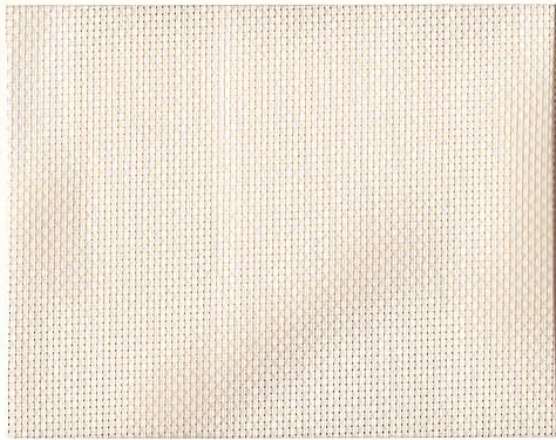


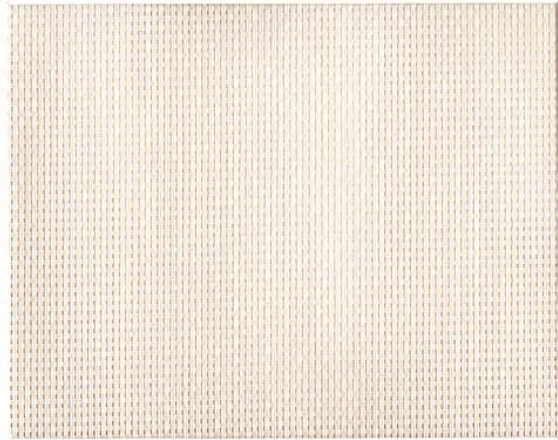
# 3G MERMET'S SOLAR AND GLARE CONTROL INTERIOR SHADE FABRICS

**E SCREEN 4100**  
5% OPENNESS FACTOR (approx.)

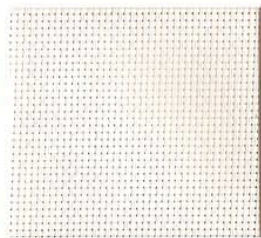


0220 BLANC/LINEN

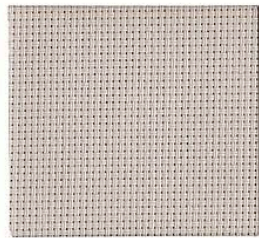
**E SCREEN 4110**  
10% OPENNESS FACTOR (approx.)



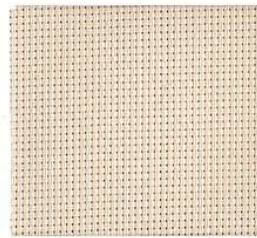
0220 BLANC/LINEN



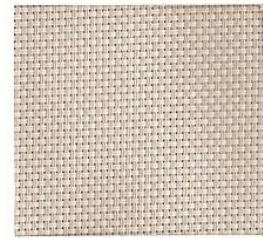
0202 BLANC/BLANC



0707 PERLE/PERLE



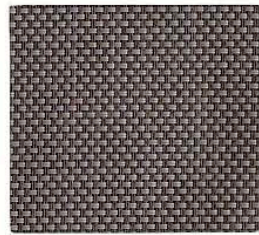
2020 LINEN/LINEN



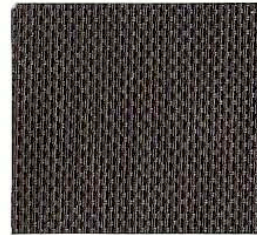
0720 PERLE/LINEN



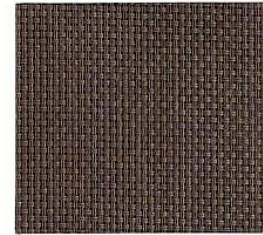
0207 BLANC/PERLE



3001 CHARCOAL/GRIS



3030 CHARCOAL/CHARCOAL



3006 CHARCOAL/BRONZE

All small samples are shown in style 4100. All colors are available in a 5% O-F (style 4100) or a 10% O-F (style 4110)...  
... Please specify preferred openness factor (O-F) at time of order placement

**SPECIFICATION DATA – E SCREEN 4100 5% OPENNESS FACTOR (approx.)**

Composition	36% Fiberglass/64% PVC	Fire Classification...
Width	3.5"(89 mm), 61" (155 cm) and 98.4" (250 cm)	NFPA 701-89 Small
Weight	11.6 oz/yd <sup>2</sup> (395 g/m <sup>2</sup> ) ± 5%	NFPA 701-89 Large
Thickness	0.40 mm (16 mil) ± 5%	NFPA 701-96 TM #1
Yarn Count	Warp/56 Weft/51 per inch	California U.S. Title 19
Breaking Strength	Warp/250 Weft/270 lbs/in	

**FENESTRATION PROPERTIES FOR 3G MERMET E SCREEN 4100 5% OPENNESS FACTOR (approx.)**

Description	Ts	Rs	As	Tuv	Tv	O-F	-----SC (Internal)-----		
							1/8"Cl	1/4"Cl	1/4"H.A.
0202 Blanc/Blanc	19	61	20	7	12	6	0.38	0.37	0.34
0207 Blanc/Perle	12	47	41	6	8	6	0.46	0.45	0.38
0220 Blanc/Linen	16	56	28	7	9	6	0.40	0.40	0.35
0707 Perle/Perle	9	35	56	7	7	6	0.54	0.52	0.41
0720 Perle/Linen	10	41	49	6	7	6	0.50	0.48	0.40
2020 Linen/Linen	14	50	36	7	9	7	0.44	0.43	0.37
3001 Charcoal/Gris	6	9	85	7	5	5	0.71	0.67	0.49
3006 Charcoal/Bronze	7	7	86	7	6	6	0.72	0.68	0.50
3030 Charcoal/Charcoal	6	4	90	7	6	6	0.74	0.70	0.51

The above fenestration property tests were conducted by Matrix, Inc. at its Mesa, Arizona solar laboratory. The samples were tested in accordance with ASHRAE Standard 74-1988, "Methods of Measuring Solar-Optical Properties of Materials."



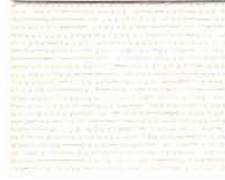


# 3G MERMET'S OPAQUE AND SEMI-TRANSPARENT INTERIOR SHADE FABRICS

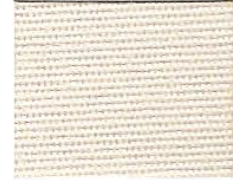
## OBION 11203 SEMI-TRANSPARENT



623 SAHEL



600 BLANC



623 SAHEL

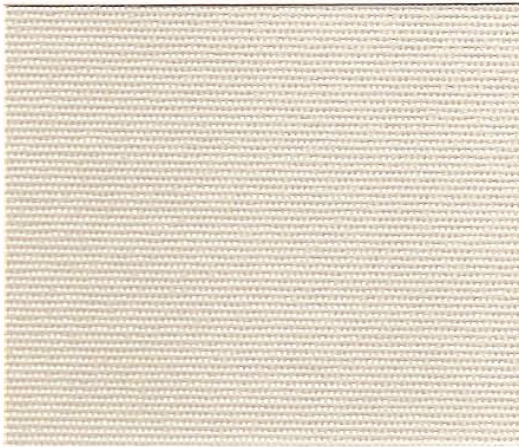


618 MISSISSIPPI



608 CHARTREUX

## FLOCKE 11201 OPAQUE



623 SAHEL



600 BLANC



623 SAHEL



618 MISSISSIPPI



603 BEIGE



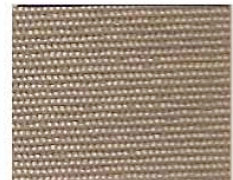
625 CORALINE



626 ANGORA



608 CHARTREUX



609 LOUTRE



606 NOIR



615 CUIVRE



614 PETROLE



619 ENCRE



# 3G MERMET'S OPAQUE AND SEMI-TRANSPARENT INTERIOR SHADE FABRICS

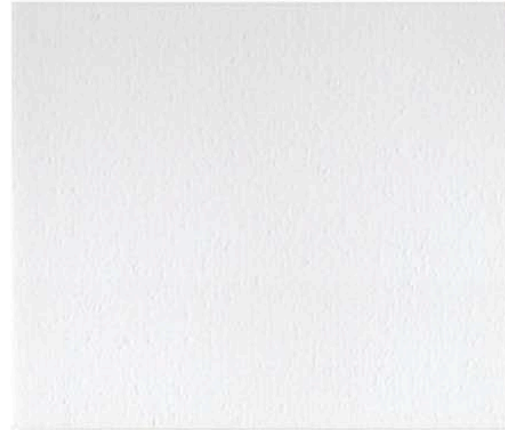
## OBION 11203 SEMI-TRANSPARENT

OBION 11203	
Composition	72% Fiberglass/ 24% Acrylic/4% Cotton Flocked Backing
Openness Factor	Semi-Transparent
Width	78" (200 cm)
Weight	10.0 oz./yd <sup>2</sup> (340 g/m <sup>2</sup> ) ± 5%
Thickness	0.46 mm (18 mil) ± 5%
Yarn Count	Warp/56 Weft/23 per inch
Breaking Strength	Warp/278 Weft/189 lbs/in.
Elongation to Break Point	Warp 5% Weft 1%
Colorfastness to Light	Excellent on all colors except white
Dimensional Stability	
Twist	≤ 5°
Stretch	± 3 mm
Cupping	≤ 5 mm
Fire Classification	NFPA 701-89 Small NFPA 701-89 Large NFPA 701-96 TM #1 California U.S. Title 19



## FLOCKE 11201 OPAQUE

FLOCKE 11201	
Composition	42% Fiberglass/51% Acrylic/ 7% Titanium Oxide + Cotton Flocked Backing
Openness Factor	Opaque
Width	3.5" (89 mm) and 78" (200 cm)
Weight	12.3 oz./yd <sup>2</sup> (420 g/m <sup>2</sup> ) ± 5% (colors 606, 614, 617 and 619) 15.3 oz./yd <sup>2</sup> (520 g/m <sup>2</sup> ) ± 5% (all other colors)
Thickness	0.46 mm (18 mil) ± 5% (colors 606, 614, 617 and 619) 0.52 mm (20 mil) ± 5% (all other colors)
Yarn Count	Warp/56 Weft/23 per inch
Breaking Strength	Warp/305 Weft/197 lbs/in.
Elongation to Break Point	Warp 5% Weft 1%
Colorfastness to Light	Excellent on all colors except white
Dimensional Stability	
Twist	≤ 5°
Stretch	± 3 mm
Cupping	≤ 5 mm
Fire Classification	NFPA 701-89 Small NFPA 701-89 Large California U.S. Title 19



### RECOMMENDED FABRICATION

High frequency or thermic welding, or sewing. Specific welding tape (IS Tape) is required for H.F./thermic welding. Sewing will cause pinholes if not properly fabricated.

### RECOMMENDED MAINTENANCE

Remove dust with vacuum cleaner. Clean with sponge, cold water and mild detergent (5%). Rinse by immersion in clean water. Dry in upright position with blind open and verify the flatness of fabric.

**Do not rub the fabric hard as this will cause discoloring.**

### FENESTRATION PROPERTIES FOR OBION 11203 AND FLOCKE 11201

Description	Ts	Rs	As	Tuv	Tv	O-F	SC (Internal Shade)		
							1/8"Cl	1/4"Cl	1/4"H.A.
Obion 11203									
600 Blanc	10	73	17	0	6	1	0.26	0.27	0.29
Flocke 11201									
600 Blanc	0	69	31	0	0	N/A	0.27	0.28	0.29
606 Noir	0	68	32	0	0	N/A	0.28	0.28	0.29

The above Fenestration Property tests were conducted by Matrix, Inc. at its Mesa, Arizona solar laboratory. The samples were tested in accordance with ASHRAE Standard 74-1988, "Methods of Measuring Solar-Optical Properties of Materials".

