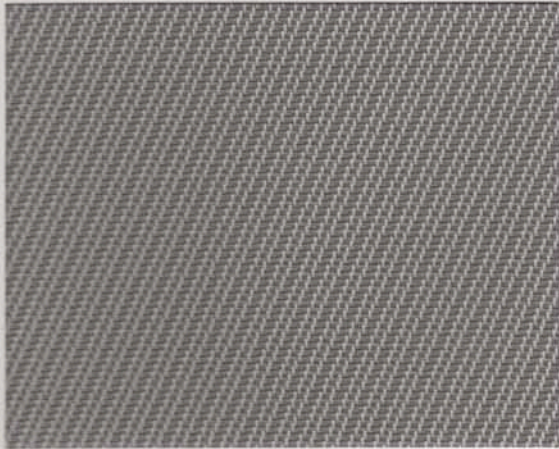


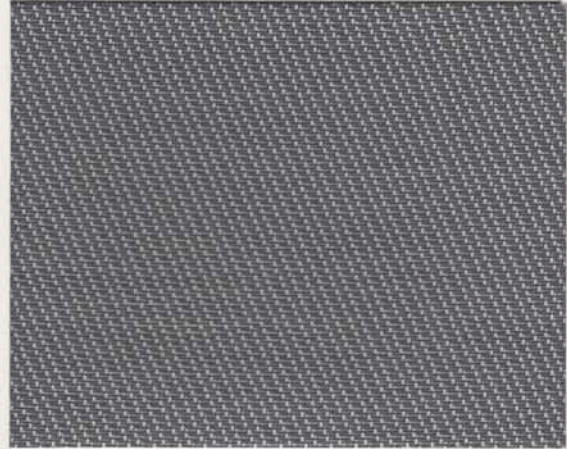
3G MERMET'S SOLAR AND GLARE CONTROL INTERIOR SHADE FABRICS

T SCREEN 9605
~5% OPEN

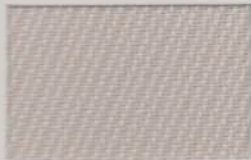


200106/M79 Linen/Gris/Bronze

T SCREEN 9705
~5% OPEN



0230 White/Charcoal



Dark Side



Light Side

0220/M84 White/Linen



Dark Side



Light Side

202007/M80 Linen/Linen/Perle



Dark Side

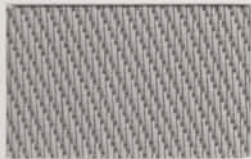


Light Side

0702 Perle/White



Dark Side



Light Side

200106/M79 Linen/Gris/Bronze

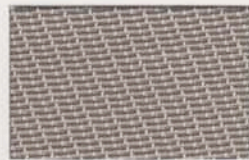


Dark Side



Light Side

3001 Charcoal/Gris

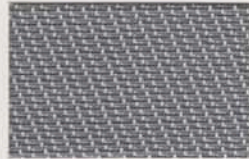


Dark Side



Light Side

021006/M113 White/Sable/Bronze

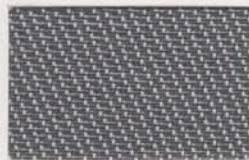


Dark Side



Light Side

020130/M116 White/Gris/Charcoal

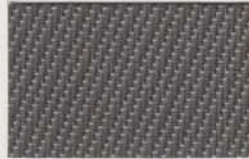


Dark Side



Light Side

0230 White/Charcoal



Dark Side

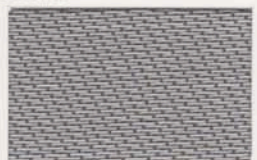


Light Side

3010 Charcoal/Sable

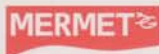


Dark Side



Light Side

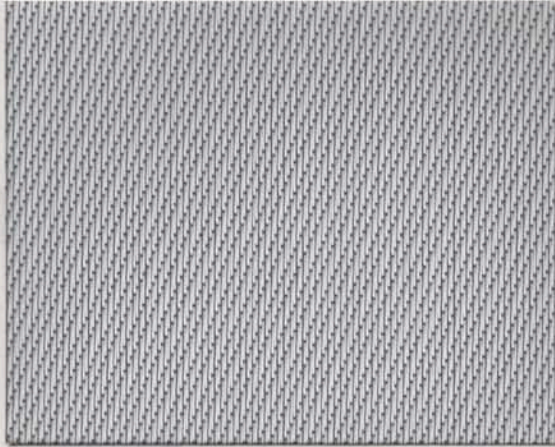
302007/M85 Charcoal/Linen/Perle



PLEASE NOTE: T Screen fabrics have both a light side and a dark side. It is important to specify which side should be facing the room and which side should be facing the window before the shade is manufactured.

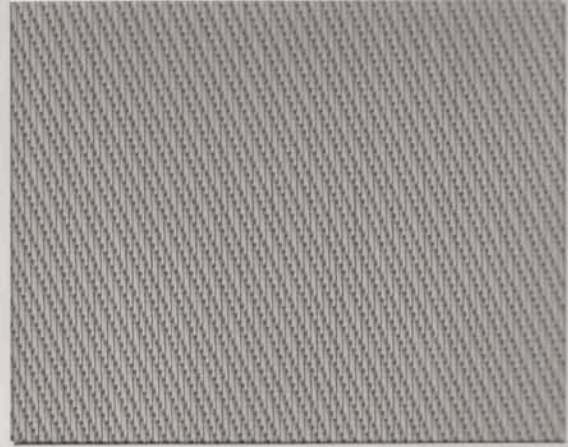
3G MERMET'S SOLAR AND GLARE CONTROL INTERIOR SHADE FABRICS

T SCREEN 9705
~5% OPEN



0230 White/Charcoal

T SCREEN 9605
~5% OPEN



200106/M79 Linen/Gris/Bronze

SPECIFICATION DATA – T SCREEN 9605 & 9705

Composition	36% Fiberglass/64% PVC	Fire Classification:
Width	61" (155cm), 78" (200cm), 98.4" (250cm)*, 122" (310cm)**	NFPA 701-99 TM #1
	* T Screen 9705 available in 98" width only.	California U.S. Title 19
	** 122" stocked in 9605 colors 0220, 0702, and 3001 only.	
Weight	12.1 oz/yd ² (410g/m ²) ± 5%	
Thickness	0.70mm (28 mil) ± 5%	
Yarn Count	Warp/56 Weft/51 (per inch)	
Breaking Strength	Warp ~ 260 / Weft ~ 220 (lbs/inch)	

FENESTRATION PROPERTIES FOR 3G MERMET T SCREEN 9605

Color Number & Name	Ts	Rs	As	Tuv	Tv	O-F	S/C (Internal)		
							1/8" CI	1/4" CI	1/4" H.A.
0220/M84 White/Linen	18	57	25	7	13	5	0.40	0.40	0.35
Dark Side	18	54	28	7	13	-	0.42	0.42	0.36
0702 Perle/White	13	47	40	7	11	6	0.46	0.45	0.38
Dark Side	13	39	48	7	11	-	0.52	0.50	0.41
200106/M79 Linen/Gris/Bronze	9	37	54	7	9	6	0.52	0.50	0.41
Dark Side	9	23	68	7	9	-	0.62	0.59	0.45
202007/M80 Linen/Linen/Perle	15	48	37	7	12	7	0.46	0.45	0.38
Dark Side	15	44	41	7	12	-	0.49	0.47	0.39
3001 Charcoal/Gris	6	11	83	6	7	5	0.69	0.66	0.49
Dark Side	6	7	87	6	7	-	0.72	0.68	0.50

FENESTRATION PROPERTIES FOR 3G MERMET T SCREEN 9705

Color Number & Name	Ts	Rs	As	Tuv	Tv	O-F	S/C (Internal)		
							1/8" CI	1/4" CI	1/4" H.A.
020130/M116 White/Gris/Sable	12	38	50	7	12	7	0.52	0.50	0.41
Dark Side	12	15	73	7	12	-	0.68	0.65	0.48
021006/M113 White/Sable/Bronze	16	43	41	7	13	7	0.50	0.48	0.40
Dark Side	16	25	59	7	13	-	0.62	0.59	0.46
0230 White/Charcoal	10	40	50	6	10	6	0.50	0.49	0.40
Dark Side	10	12	78	6	10	-	0.70	0.66	0.49
3010 Charcoal/Sable	9	21	70	7	9	6	0.63	0.60	0.46
Dark Side	9	7	84	7	9	-	0.73	0.69	0.51
302007/M85 Charcoal/Linen/Perle	9	28	63	6	9	6	0.58	0.56	0.44
Dark Side	9	10	81	6	9	-	0.71	0.67	0.50

The solar transmittance (Ts), solar reflectance (Rs), solar absorptance (As), ultra-violet transmittance (Tuv), visible light transmittance (Tv) and Openness-Factor (O-F) were determined for the fabric alone. The Shading Coefficients (SC) were determined for the fabric used with a single light of 1/8" double strength glass, a 1/4" clear plate and a 1/4" heat absorbing (H.A.) plate. The Shading Coefficients are for the fabric hung internally unless otherwise indicated. The test data and calculated results are presented in the above table. The Ts, Rs, As, Tuv, Tv and O-F are expressed as percentages.

The above fenestration property tests were conducted by Matrix, Inc. at its Mesa, Arizona solar laboratory. The samples were tested in accordance with ASHRAE Standard 74-1988, "Methods of Measuring Solar-Optical Properties of Materials."



3G MERMET'S SOLAR AND GLARE CONTROL INTERIOR SHADE FABRICS

T SCREEN 9601
~1% OPEN



0702 Perle/White - Dark Side

T SCREEN 9601
~1% OPEN



0702 Perle/White - Light Side



Dark Side



Light Side

0702 Perle/White

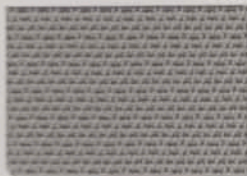


Dark Side



Light Side

072010/M114 Perle/Linen/Sable

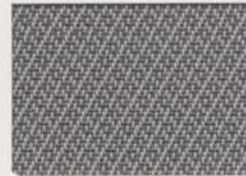


Dark Side

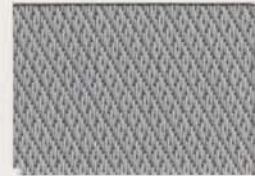


Light Side

071006/M115 Perle/Sable/Bronze



Dark Side



Light Side

070630/M82 Perle/Bronze/Charcoal



Dark Side



Light Side

302007/M85 Charcoal/Linen/Perle



Dark Side



Light Side

3001 Charcoal/Gris



Dark Side



Light Side

3030 Charcoal/Charcoal

PLEASE NOTE: T Screen fabrics have both a light side and a dark side. It is important to specify which side should be facing the room and which side should be facing the window before the shade is manufactured.



3G MERMET'S SOLAR AND GLARE CONTROL INTERIOR SHADE FABRICS

T SCREEN 9601
~1% OPEN



0702 Perle/White - Light Side

T SCREEN 9601
~1% OPEN



0702 Perle/White - Dark Side

SPECIFICATION DATA – T SCREEN 9601

Composition	36% Fiberglass/64% PVC
Width	98.4" (250cm)
Weight	12.1 oz/yd ² (410g/m ²) ± 5%
Thickness	0.70mm (28 mil) ± 5%
Yarn Count	Warp/66 Weft/41 (per inch)
Breaking Strength	Warp ~ 190 / Weft ~ 140 (lbs/inch)

Fire Classification:
NFPA 701-99 TM #1
California U.S. Title 19

FENESTRATION PROPERTIES FOR 3G MERMET T SCREEN 9601

Color Number & Name	Ts	Rs	As	Tuv	Tv	S/C (Internal)		
						1/8" CI	1/4" CI	1/4" H.A.
0702 Perle/White	16	44	40	3	11	0.49	0.48	0.39
Dark Side	16	40	44	3	11	0.52	0.50	0.41
070630/M82 Perle/Bronze/Charcoal	8	26	66	3	7	0.60	0.57	0.44
Dark Side	8	16	76	3	7	0.66	0.63	0.47
071006/M115 Perle/Sable/Bronze	11	31	58	3	8	0.57	0.55	0.43
Dark Side	11	26	63	3	8	0.60	0.58	0.45
072010/M114 Perle/Linen/Sable	14	38	48	3	10	0.53	0.51	0.41
Dark Side	14	37	49	3	10	0.53	0.52	0.41
3001 Charcoal/Gris	3	9	88	3	3	0.70	0.66	0.49
Dark Side	3	6	91	3	3	0.72	0.68	0.50
302007/M85 Charcoal/Linen/Perle	3	19	78	3	3	0.63	0.60	0.46
Dark Side	3	9	88	3	3	0.70	0.66	0.49
3030 Charcoal/Charcoal	3	4	93	3	3	0.73	0.69	0.51
Dark Side	3	4	93	3	3	0.73	0.69	0.51

The solar transmittance (Ts), solar reflectance (Rs), solar absorptance (As), ultra-violet transmittance (Tuv) and visible light transmittance (Tv) were determined for the fabric alone. The Shading Coefficients (SC) were determined for the fabric used with a single light of 1/8" double strength glass, a 1/4" clear plate and a 1/4" heat absorbing (H.A.) plate. The Shading Coefficients are for the fabric hung internally unless otherwise indicated. The test data and calculated results are presented in the above table. The Ts, Rs, As, Tuv and Tv are expressed as percentages.

The above fenestration property tests were conducted by Matrix, Inc. at its Mesa, Arizona solar laboratory. The samples were tested in accordance with ASHRAE Standard 74-1988, "Methods of Measuring Solar-Optical Properties of Materials."

