

**THE SUN,  
THE VIEW,  
THE SOLUTION...**

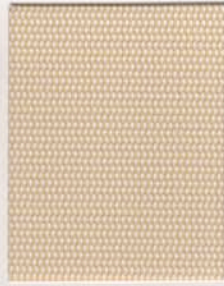
**M Screen  
3% & 5%**

**Weavers of solar protection textiles.**

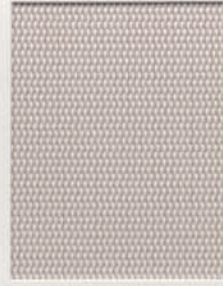
**MERMET** 



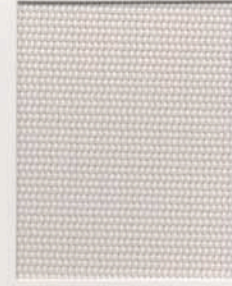
0202 White/White



0205 White/Canari



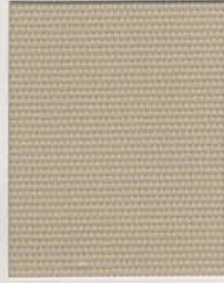
0210 White/Sable



0220 White/Linen



0222 White/Stone



0705 Perle/Canari



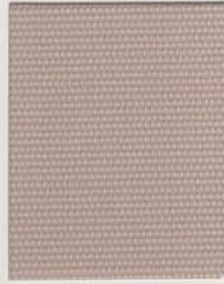
0707 Perle/Perle



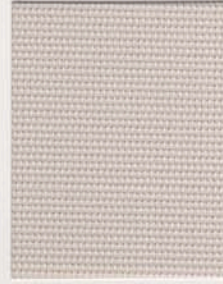
0710 Perle/Sable



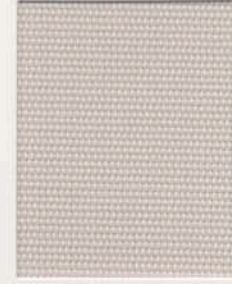
0720 Perle/Linen



0771 Perle/Apricot



2020 Linen/Linen



2022 Linen/Stone



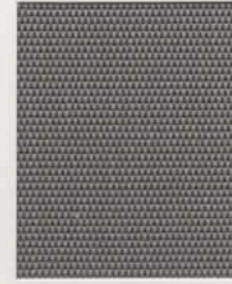
3001 Charcoal/Gris



3006 Charcoal/Bronze



3009 Charcoal/Mandarine



3010 Charcoal/Sable



3030 Charcoal/Charcoal



3071 Charcoal/Apricot



3081 Charcoal/Parrot



3091 Charcoal/Sky

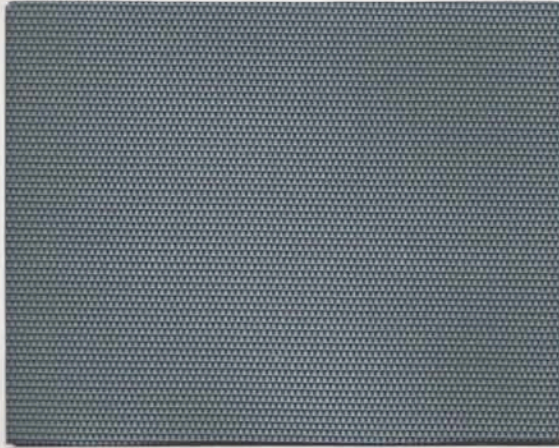
Small samples are 5% open, but all colors are available in 3%. Please note that 3% fabrics may appear darker than these small 5% samples.

M Screen 8503 is a denser fabric, thus the darker appearance.

We recommend that you request a larger 8x10 sample of M Screen 8503 to ensure complete satisfaction before ordering.

# 3G MERMET'S SOLAR AND GLARE CONTROL INTERIOR SHADE FABRICS

**M SCREEN 8503**  
~3% OPEN



3091 Charcoal/Sky

**M SCREEN 8505**  
~5% OPEN



3091 Charcoal/Sky

## SPECIFICATION DATA – M SCREEN 8505

Composition	36% Fiberglass/64% PVC	Fire Classification:
Width	61" (155cm), 78" (200cm), 98.4" (250cm), 122" (310cm)*	NFPA 701-99 TM #1
	*122" stocked in 0202, 0220, 0707, 0720, 3006, 3030 only.	California U.S. Title 19
Weight	11.9 oz/yd <sup>2</sup> (405g/m <sup>2</sup> ) ± 5%	
Thickness	0.55mm (22 mil) ± 5%	
Yarn Count	Warp/56 Weft/51 (per inch)	
Breaking Strength	Warp – 239 / Weft – 233 (lbs/inch)	

## FENESTRATION PROPERTIES FOR 3G MERMET M SCREEN 8505

Color Number & Name	Ts	Rs	As	Tuv	Tv	O-F	S/C (Internal)		
							1/8" CI	1/4" CI	1/4" H.A.
0202 White/White	20	63	17	7	15	6	0.36	0.36	0.33
0205 White/Canari	24	56	20	4	16	5	0.43	0.42	0.36
0210 White/Sable	20	48	32	4	12	4	0.47	0.46	0.39
0220 White/Linen	21	56	23	7	15	6	0.42	0.41	0.36
0222 White/Stone	22	56	22	7	15	6	0.42	0.41	0.36
0705 Perle/Canari	19	41	40	5	14	5	0.52	0.50	0.41
0707 Perle/Perle	15	35	50	7	11	5	0.55	0.53	0.42
0710 Perle/Sable	18	33	49	6	11	5	0.57	0.55	0.43
0720 Perle/Linen	19	40	41	7	13	5	0.53	0.51	0.41
0771 Perle/Apricot	22	38	40	6	13	5	0.55	0.53	0.42
2020 Linen/Linen	18	51	31	7	12	5	0.45	0.44	0.37
2022 Linen/Stone	23	48	29	7	15	5	0.48	0.47	0.39
3001 Charcoal/Gris	6	10	84	7	7	5	0.70	0.66	0.49
3006 Charcoal/Bronze	6	7	87	7	7	5	0.72	0.68	0.50
3009 Charcoal/Mandarine	7	13	80	5	5	4	0.68	0.65	0.48
3010 Charcoal/Sable	7	12	81	5	7	5	0.69	0.65	0.49
3030 Charcoal/Charcoal	6	5	89	7	7	5	0.73	0.69	0.51
3071 Charcoal/Apricot	7	13	80	5	7	5	0.68	0.65	0.48
3081 Charcoal/Parrot	6	13	81	5	6	5	0.68	0.65	0.48
3091 Charcoal/Sky	5	11	84	4	5	5	0.69	0.65	0.49

The solar transmittance (Ts), solar reflectance (Rs), solar absorptance (As), ultra-violet transmittance (Tuv), visible light transmittance (Tv) and Openness-Factor (O-F) were determined for the fabric alone. The Shading Coefficients (SC) were determined for the fabric used with a single light of 1/8" double strength glass, a 1/4" clear plate and a 1/4" heat absorbing (H.A.) plate. The Shading Coefficients are for the fabric hung internally unless otherwise indicated. The test data and calculated results are presented in the above table. The Ts, Rs, As, Tuv, Tv and O-F are expressed as percentages.

The above fenestration property tests were conducted by Matrix, Inc. at its Mesa, Arizona solar laboratory. The samples were tested in accordance with ASHRAE Standard 74-1988, "Methods of Measuring Solar-Optical Properties of Materials."

