

ACACIA MOTORIZED ROLLER SHADE **SPECIFICATIONS**

12500

PART 1 GENERAL

1.01 SECTION INCLUDES

- A. Motorized Roller Shades and Hardware

1.02 SYSTEM DESCRIPTION

- A. Motor operated roller shades, individually or group controlled

1.03 SUBMITTALS

- A. Product data: Submit five copies of manufactures technical data and installation instructions.
- B. Samples: Submit three samples of each shade cloth with complete color swatch.
- C. Shop Drawings: Submit drawing of mechanical product with appropriate dimensions.

1.04 QUALITY ASSURANCE

- A. The manufacturer of these products shall show a minimum of 10 years of documented experience.
- B. A qualified installer or sub-contractor shall complete the installation.

1.05 DELIVERY, STORAGE AND HANDLING

- A. Deliver products to job site in manufacture's original packaging.
- B. Handle and store products to prevent damage of materials, operating mechanisms, and finishes.

1.06 JOB CONDITIONS

- A. Prior to installation ensure building is completely enclosed, and wet work is complete.

1.07 WARRANTY

- A. Provide manufacture's standard 10 year warranty against defects in manual shade material and workmanship, beginning at date of substantial completion. Electrical components and motors are warranted for a period of five years.

PART 2 PRODUCTS

2.01 MANUFACTURES

- A. ACACIA COPORATION
7 Crawford Street
McKees Rocks, PA 15136
Phone (800) 898-5912, Fax (412) 771-3828

2.02 MATERIALS

- A. **Motors:** AC Motors shall be 110 volt tubular motors and shall be designed to meet United States and European electrical standards. Motors shall be manufactured by Somfy Systems, Inc. and shall incorporate the highest quality components and technology. Various motors shall be used depending upon the size of the shade and the control options.
 - 1. *Gears:* Shall have a three stage planetary gear mechanism.
 - 2. *Brake:* Shall have an electromagnetic disk brake that results in a smooth and accurate stop without allowing any slippage. The motor brake features full braking power in the event of a power failure.
 - 3. *Motor:* Shall be a maintenance free and permanently lubricated asynchronous motor. It shall feature protection from overheating as well as sturdy electrical and mechanical design for extending the life of the motor.

ACACIA MOTORIZED ROLLER SHADE SPECIFICATIONS

12500

4. *Motor Control Options:* Refer to the Acacia Motorization Control Matrix for control options.

B. Motor types & uses:

1. *LT-50 Motor Series:* 110 volt AC motors
 - a. LT-50 504 Motor—31 lb. Lift capacity
 - b. LT-50 506 Motor—46 lb. Lift capacity
 - c. LT-50 510 Motor—78 lb. Lift capacity

Use: The LT-50 motor is a high voltage “hardwired” system for heavy duty application. It is most often used with new construction and commercial applications, but may be used for retrofit if wiring is possible.

Control Types: The LT-50 motor is available with a variety of radio frequency, infra-red, key switches, and hardwired wall switches, remote control transmitters, timers, sun and wind sensors, home automation systems, and computer interface modules.

2. *LT-50 Altus RTS Motor Series:* 110 volt AC motors
 - a. LT-50 506 Altus RTS Motor—46 lb. Lift capacity
 - b. LT-50 510 Altus RTS Motor—78 lb. Lift capacity

Use: The LT-50 Altus RTS motor is a high voltage “plug-in” system for heavy duty application which incorporates radio frequency technology inside the motor. The technology of the Altus motor is designed to eliminate wiring between the motor and the controls that operate it, resulting in the reduction of installation costs. It is used for retrofit as well as new construction and performs effectively with both commercial and residential applications.

Control Types: The LT-50 motor is available with a variety of radio frequency wall switches, remote control transmitters, timers, sun and wind sensors, home automation systems, and computer interface modules.

- C. **Shade Fabric:** Shade fabric shall be selected from a large selection of vinyl coated fiberglass woven into various openness factors and colors. Woven yarn will be interlocking and heat-treated so that all materials are securely bounded. This vinyl compound is specially formulated to withstand fading, fire, mildew, soiling, and wear and tear.

D. Shade Materials:

1. *Vinyl coated fiberglass fabrics* (E-Screen, OF 5% & 10%; T-Screen, OF 3%, 5% & 10%; M-Screen, OF 3% & 5%)
2. *Room darken fabrics* fiberglass fabrics with acrylic flocked backing (Obion 11203)
3. *Mermet Blackout fabrics* fiberglass fabrics with acrylic flocked backing (Flocke 11201)
4. *Vinyl Blackout fabrics* (Acacia 100) shall be totally opaque PVC coated fiberglass, with 64 threads per square inch. Breaking strength will be 130 x 120 pounds and weight of 14 ounces per square yard. Fabric must be made of first quality materials with no pinholes, breaks or cracks. Shade fabric must be fire retardant, washable and colorfast.

- D. **Tube Mechanism:** All tubes shall be 100% extruded aluminum with a wall thickness of 0.062”. Two tube extrusions shall be used depending upon the size of the shade and the weight of the fabric selected. Each tube shall have at least one Secure Gripe Spline fabric fixing slot to increase the rigidity of the tube, thus enabling shades to span wider openings without the risk of the tube sagging when the shade is operated.

1. *2” Tube:* Shall have an outside diameter of 2.30” and shall be extruded with six slots for increased strengthening and fabric attachment using the Secure Grip Method. This tube shall encapsulate all LT-50 and LT-50 Altus RTS 110 volt AC motors.
2. *3” Tube:* Shall have an outside diameter of 3.00” and shall be extruded with six slots for increased strengthening and fabric attachment using the Secure Grip Method. With the use of adaptors this tube shall encapsulate all LT-50 and LT-50 Altus RTS 110 volt AC motors.

SPECIFICATIONS

- E. Secure Grip Spline Mounting System:** Spline shall be flexible PVC extrusion to be RF welded to the shade fabric. The spline shall be inserted into a slot on the extruded aluminum tube allowing the fabric to be easily removed and re-installed on the roller tube- taping or stapling of the fabric to the tube is not acceptable.
- F. Hembar:** Shall be an aluminum extrusion 1" high held inside fabric bottom-pocket. The pocket shall be created by folding a 1 ¼" section of fabric behind the bottom of the shade and RF welding the fabric to itself- conventional stitching is not acceptable.
- G. Universal Mounting Brackets:** Shall operate with a heavy duty steel brackets. Brackets may be installed top, face, or side fixed and can be used for shades with both left and right hand controls. A variety of motor end brackets shall be available and shall be selected for the application required.
- H. Intermediate Brackets or Couplers:** (optional) allow one motor to lift multiple shade bands.
- I. Valance/Fascia Options:**
1. *Ceiling Pocket:* If specified, this two-piece aluminum extrusion shall encase and conceal the roller shade tube mechanism. The box is available in (W) white- only.
 2. *Closure Panel and hanger assembly:* If specified, this two-piece aluminum extrusion shall conceal the roller shade tube mechanism. This system is engineered to be used in conjunction with a drywall pocket provide by others. The closure is available in (W) white- only.
 3. *Aluminum Fascia Valance:* If specified. An aluminum fascia may be attached to conceal the roller shade tube mechanism. It shall be an "L" shape and shall have a wall thickness of .070 inches. It is available in a variety of painted finishes. The fascia shall be set to the universal fascia mounting brackets by snapping it into place on a hinge rib clip. This provides for additional strength and secure fixing. Fascia mounting brackets support the roller shade tube and the fascia panel. (not available with coupled shades)
 4. *Box Enclosure Valance:* If specified, this two-piece aluminum extrusion shall encase and conceal the roller shade tube mechanism. It is engineered to eliminate top light gap. Aluminum end caps fix at both ends of the extrusion. The box is available in a variety of painted finishes.
- J. Sill and Side Channels:** (optional) Shades are available with one-piece 2" extruded aluminum, sill and side channels to eliminate left /right side and bottom light gaps.
- K. Colors and Finishes:** Aluminum extrusions available in (W) white, (BZ) Bronze, and (AZ) anodized aluminum. Custom colors available upon request.
- L. Motor Controls:** Motors shall be operated with a variety of radio frequency, infra-red, key switches, and hardwired wall switches, remote control transmitters, timers, sun and wind sensors, home automation systems, and computer interface modules.
- M. General:** The shades shall be free of sharp edges, burs or other defects, which might be harmful. When other materials resulting in improved specifications, they may be adopted.
- N. Fabrication:** Prior to fabrication, verify actual opening dimensions by on-site measurements. Calculate shade dimensions to fit within specified tolerances. Shades shall be fabricated to fill openings from head to sill and jamb to jamb. Locate shade divisions at mullions.

2.03 RESPONSIBILITY

- A.** Shade manufacturer shall furnish all electrical control equipment, shades and accessories for a complete installation and single source responsibility.

PART 3 EXECUTION

3.01 INSPECTION AND PREPERATION

- A. Shade installer shall be responsible for inspection of site, approval of mounting surfaces, installation conditions and field measurements prior to shade installation

3.02 INSTALLATION

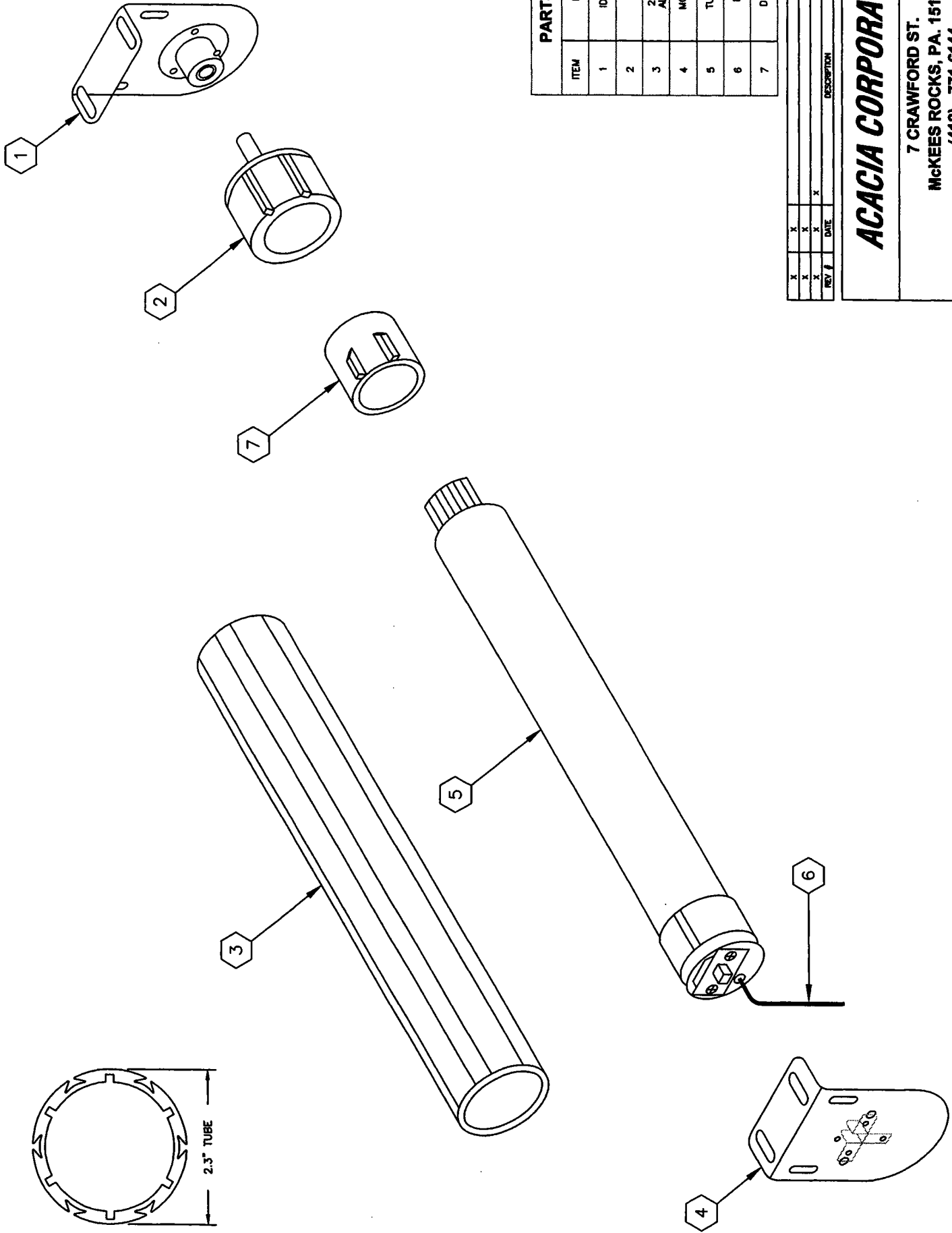
- A. Install shades in accordance with manufacturer's procedures except as otherwise specified herein.
- B. Install shade with adequate clearance to permit smooth operation of shades and any sash operators.
- C. Demonstrate shades to be in smooth, uniform working order.

3.02 CLEANING

- A. Clean soiled shades surfaces with a mild soap solution. Do not use steam, hot water, bleach or any abrasive or solvent-based cleaners. Do not machine wash.
- B. To ensure proper drying, provide adequate ventilation for shades.

3.03 WARRANTY

- A. Provide manufacture's standard 10 year warranty against defects in manual shade material and workmanship, beginning at date of substantial completion. Electrical components and motors are warranted for a period of five years.



PARTS LIST

ITEM	DESCRIPTION
1	IDLER BRACKET
2	IDLER
3	2.3" EXTRUDED ALUMINUM TUBE
4	MOTOR BRACKET
5	TUBULAR MOTOR
6	POWER CORD
7	DRIVE ADAPTOR

REV	DATE	DESCRIPTION	APPRO
X			
X			
X			
X			

ACACIA CORPORATION

7 CRAWFORD ST.
 McKEES ROCKS, PA. 15136
 (412) - 771-6144

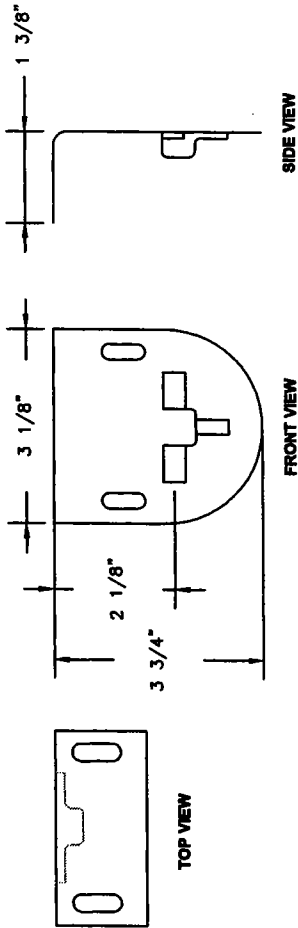
MOTORIZED BRACKET EXPLODED VIEW

DRAWING NUMBER **MS230**

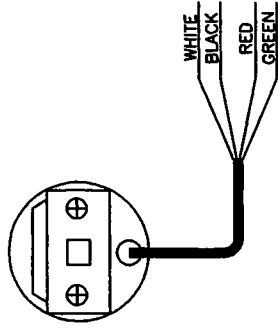
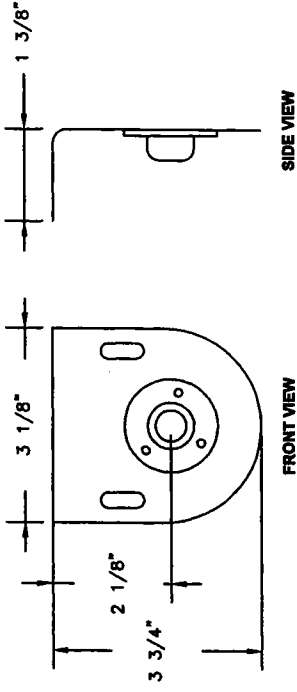
SHEET 1 OF 1

REVISION X

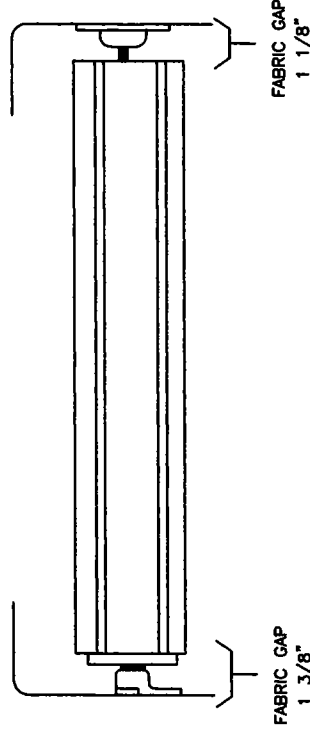
MOTOR BRACKET



IDLER BRACKET



WIRING COLOR CODE	
WHITE	NEUTRAL
BLACK	WHITE BUTTON
RED	YELLOW BUTTON
GREEN	GROUND



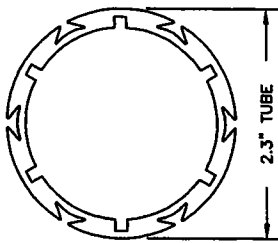
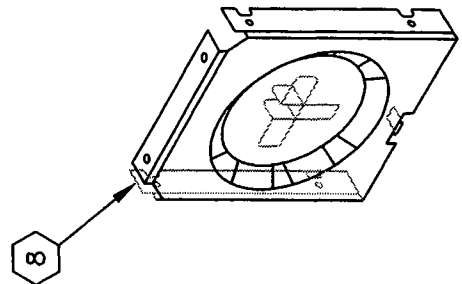
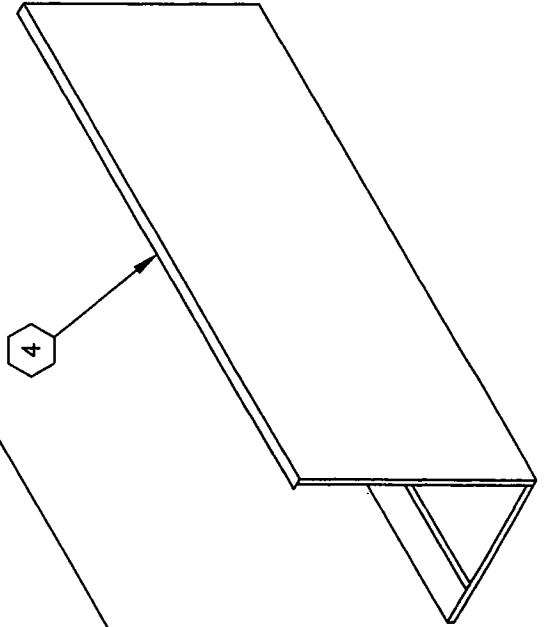
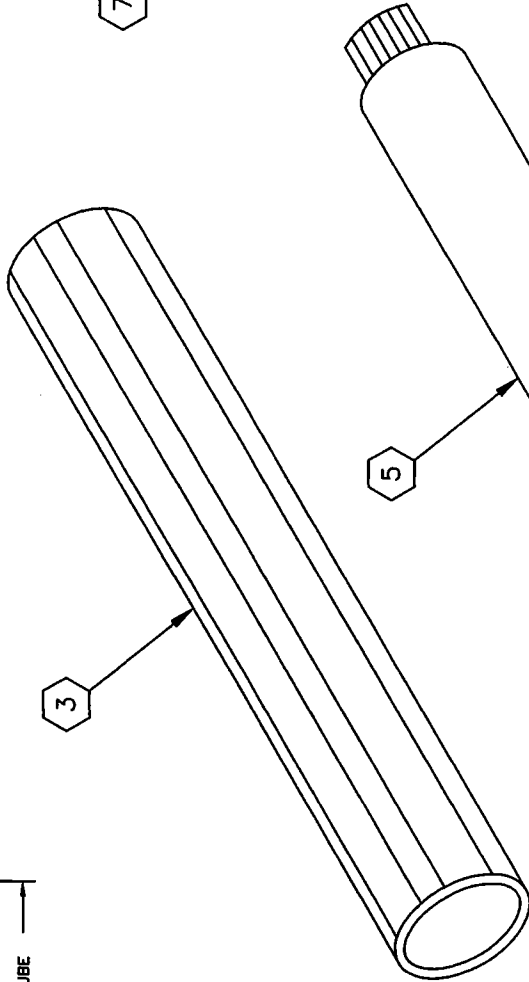
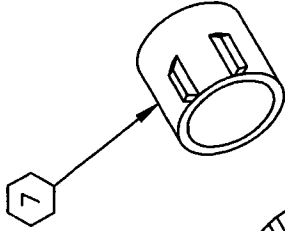
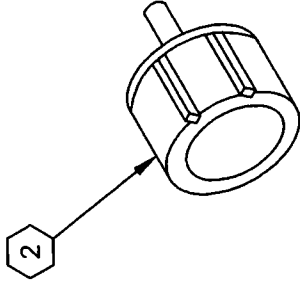
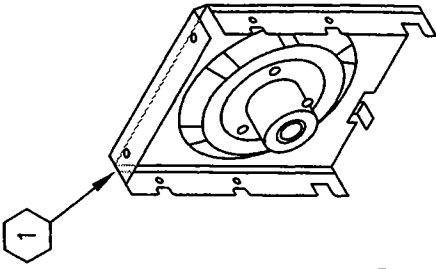
REV #	DATE	DESCRIPTION	APPRO
X			
X			
X			
X			

ACACIA CORPORATION

7 CRAWFORD ST.
 McKEES ROCKS, PA. 15136
 (412) - 771-6144

MOTORIZED BRACKET SYSTEM

DRAWING NUMBER: **MS230A** SHEET: 1 OF 1 REVISION: X



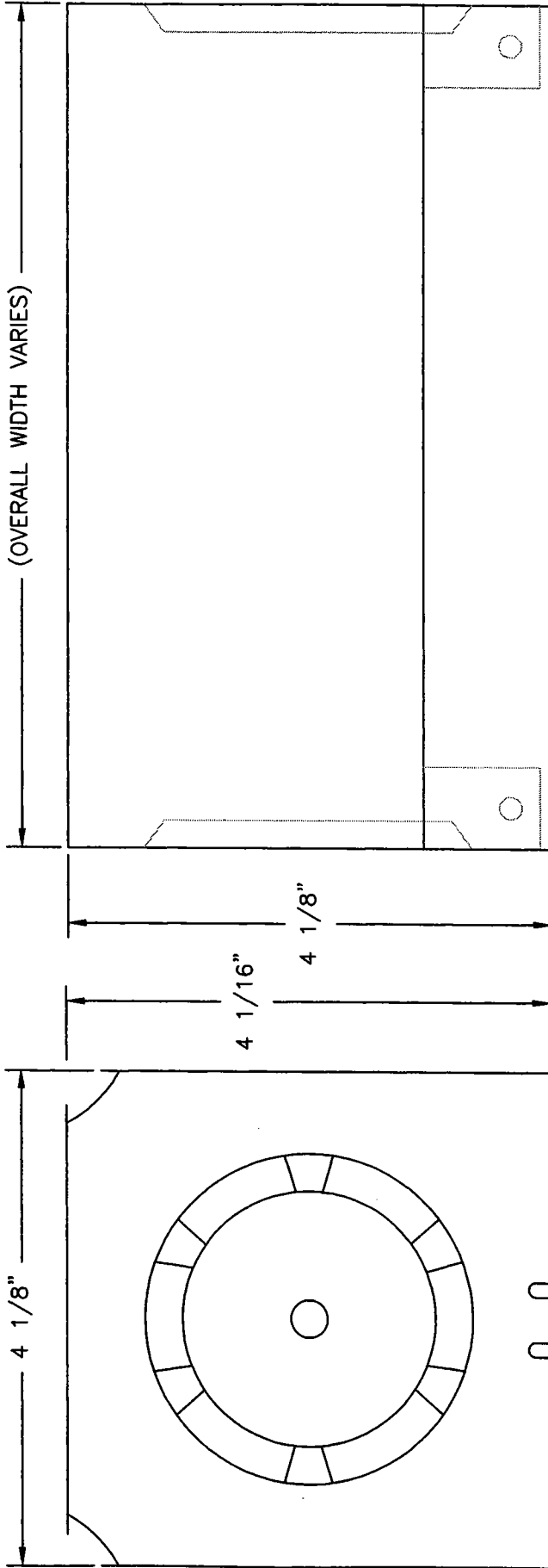
PARTS LIST	
ITEM	DESCRIPTION
1	IDLE END BRACKET
2	IDLER
3	2.3" EXTRUDED ALUMINUM TUBE
4	ALUMINUM FASCIA
5	TUBULAR MOTOR
6	POWER CORD
7	DRIVE ADAPTOR
8	MOTOR BRACKET

REV. #	DATE	DESCRIPTION	APP'D
X			
X			
X			
X			

ACACIA CORPORATION

7 CRAWFORD ST.
 McKEES ROCKS, PA. 15136
 (412) - 771-6144

MOTORIZED FASCIA EXPLODED VIEW
 DRAWING NUMBER MS230F
 SHEET 1 OF 1
 REVISION X



SIDE VIEW

BOTTOM VIEW

X	X	X	X	X	X	
X	X	X	X	X	X	
X	X	X	X	X	X	
REV. I	DATE					APP'D
DESCRIPTION						

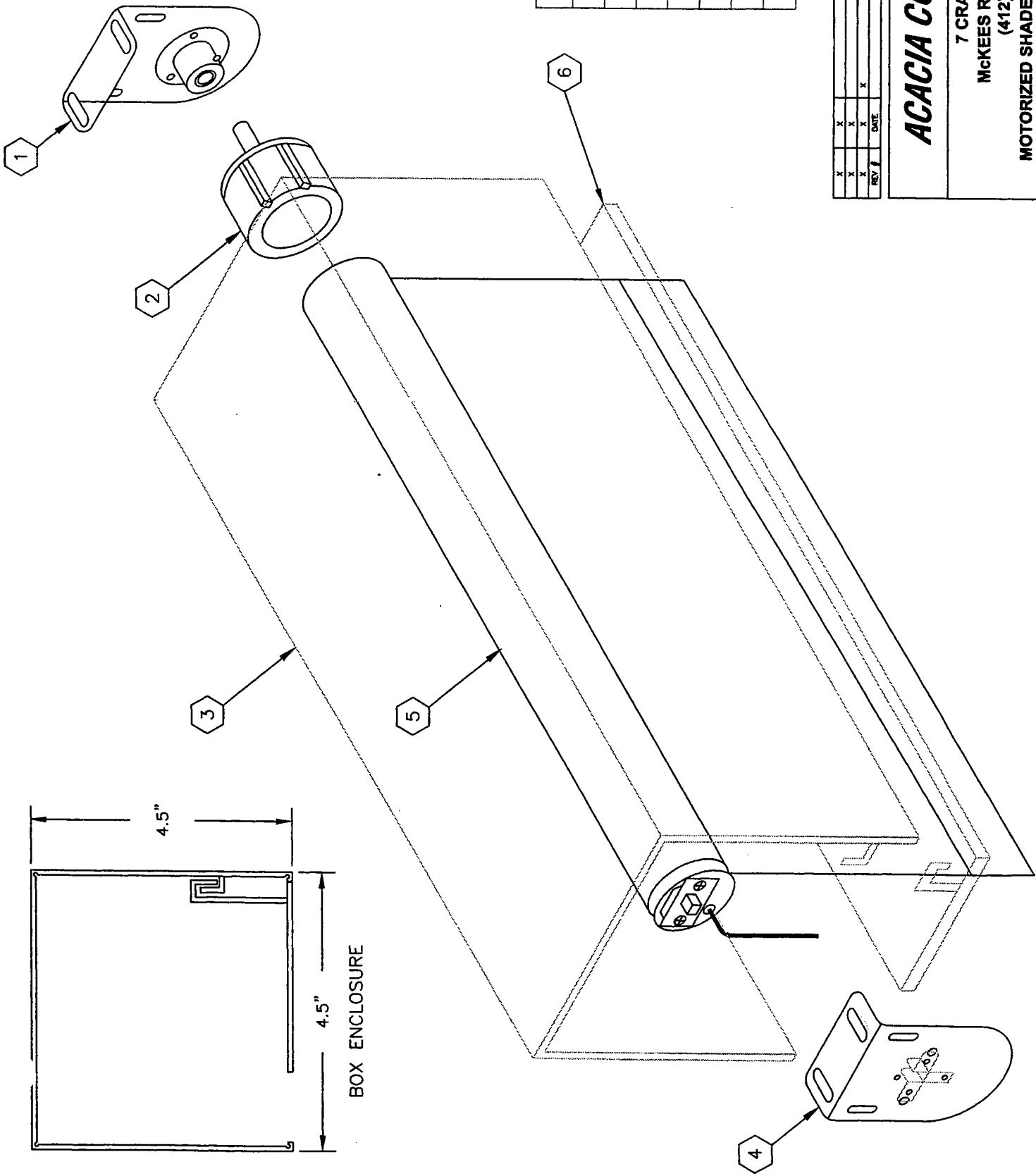
ACACIA CORPORATION

7 CRAWFORD ST.
 McKEES ROCKS, PA. 15136
 (412) - 771-6144

MOTORIZED FASCIA DIMENSIONS
 DRAWING NUMBER
MS230DM

SHEET
 1 OF 1

REVISION
 X



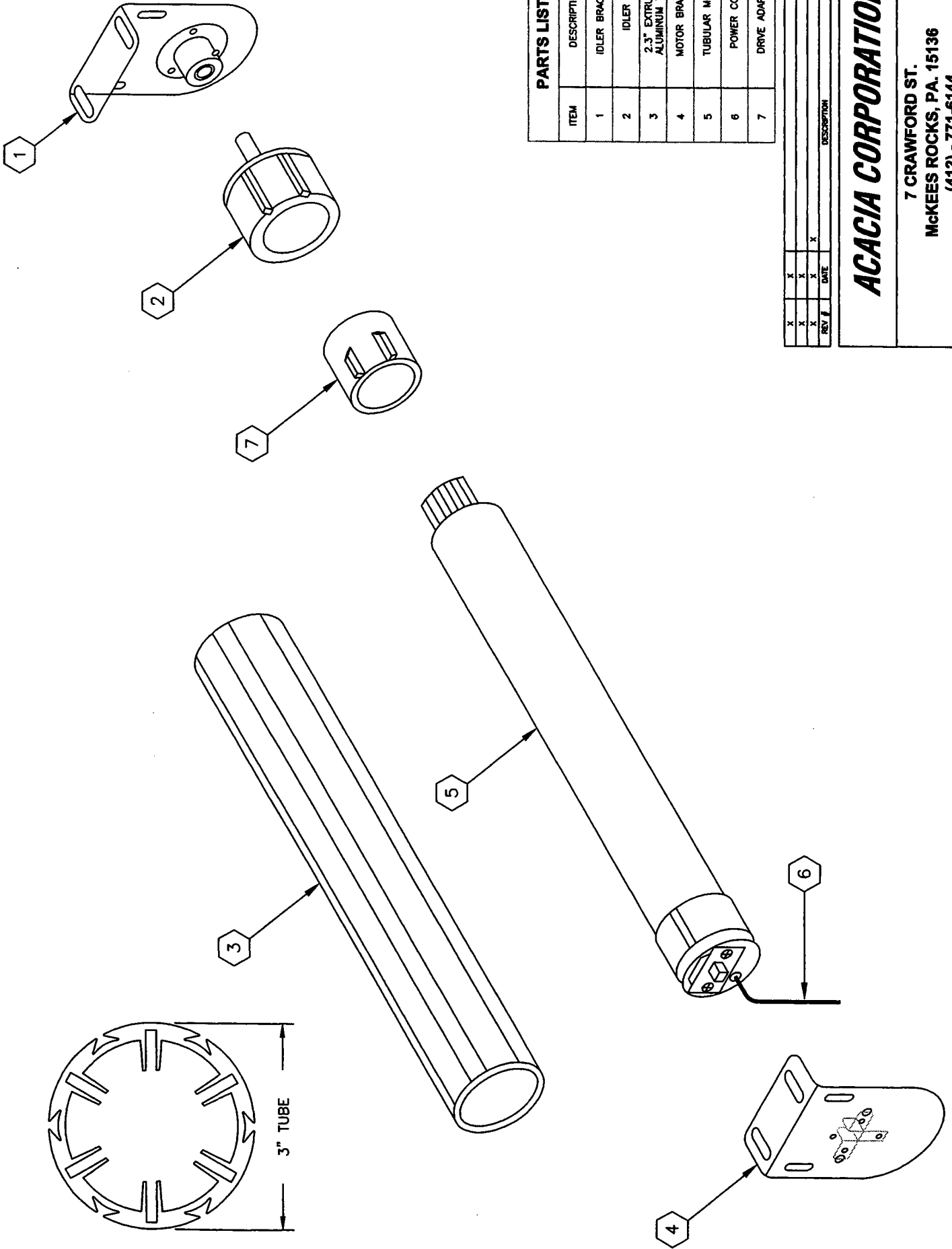
PARTS LIST	
ITEM	DESCRIPTION
1	IDLER BRACKET
2	IDLER
3	BOX ENCLOSURE
4	MOTOR BRACKET
5	MOTORIZED SHADE
6	BOTTOM CLOSURE

REV #	DATE	DESCRIPTION	APP'D
X			
X			
X			
X			

ACACIA CORPORATION
 7 CRAWFORD ST.
 McKEES ROCKS, PA. 15136
 (412) - 771-6144

DRAWING NUMBER: **MS230RD**
 SHEET: 1 OF 1
 REVISION: X

MOTORIZED SHADE WITH BOX ENCLOSURE



PARTS LIST	
ITEM	DESCRIPTION
1	IDLER BRACKET
2	IDLER
3	2.3" EXTRUDED ALUMINUM TUBE
4	MOTOR BRACKET
5	TUBULAR MOTOR
6	POWER CORD
7	DRIVE ADAPTOR

REV #	DATE	DESCRIPTION	APTD
X			
X			
X			
X			

ACACIA CORPORATION

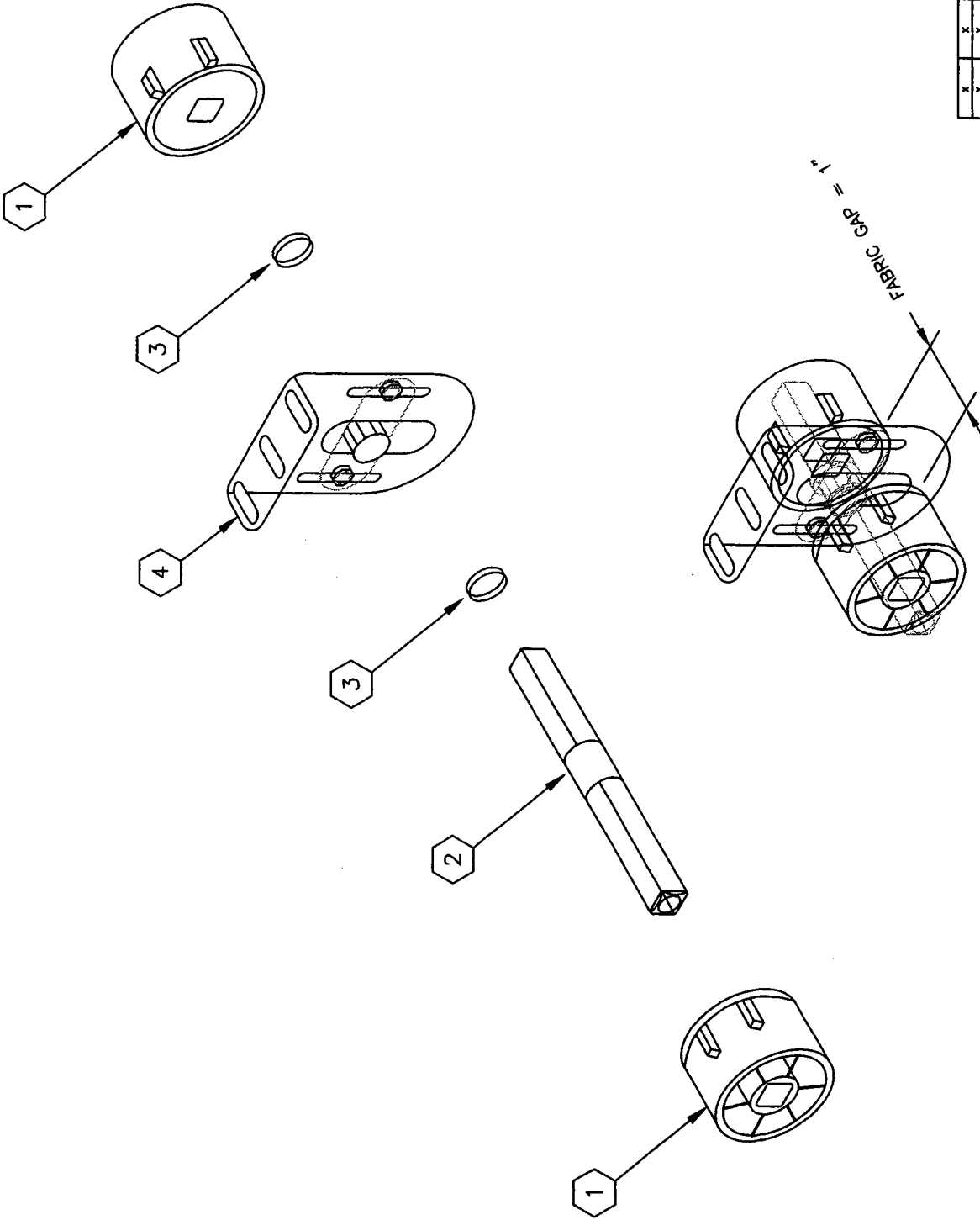
7 CRAWFORD ST.
 McKEES ROCKS, PA. 15136
 (412) - 771-6144

BRACKET EXPLODED VIEW (WITH 3" TUBE)

DRAWING NUMBER
MS300

SHEET
 1 OF 1

REVISION
 X



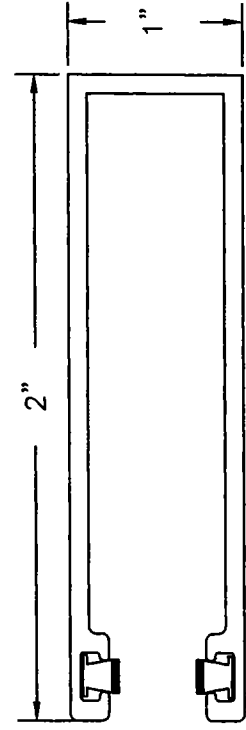
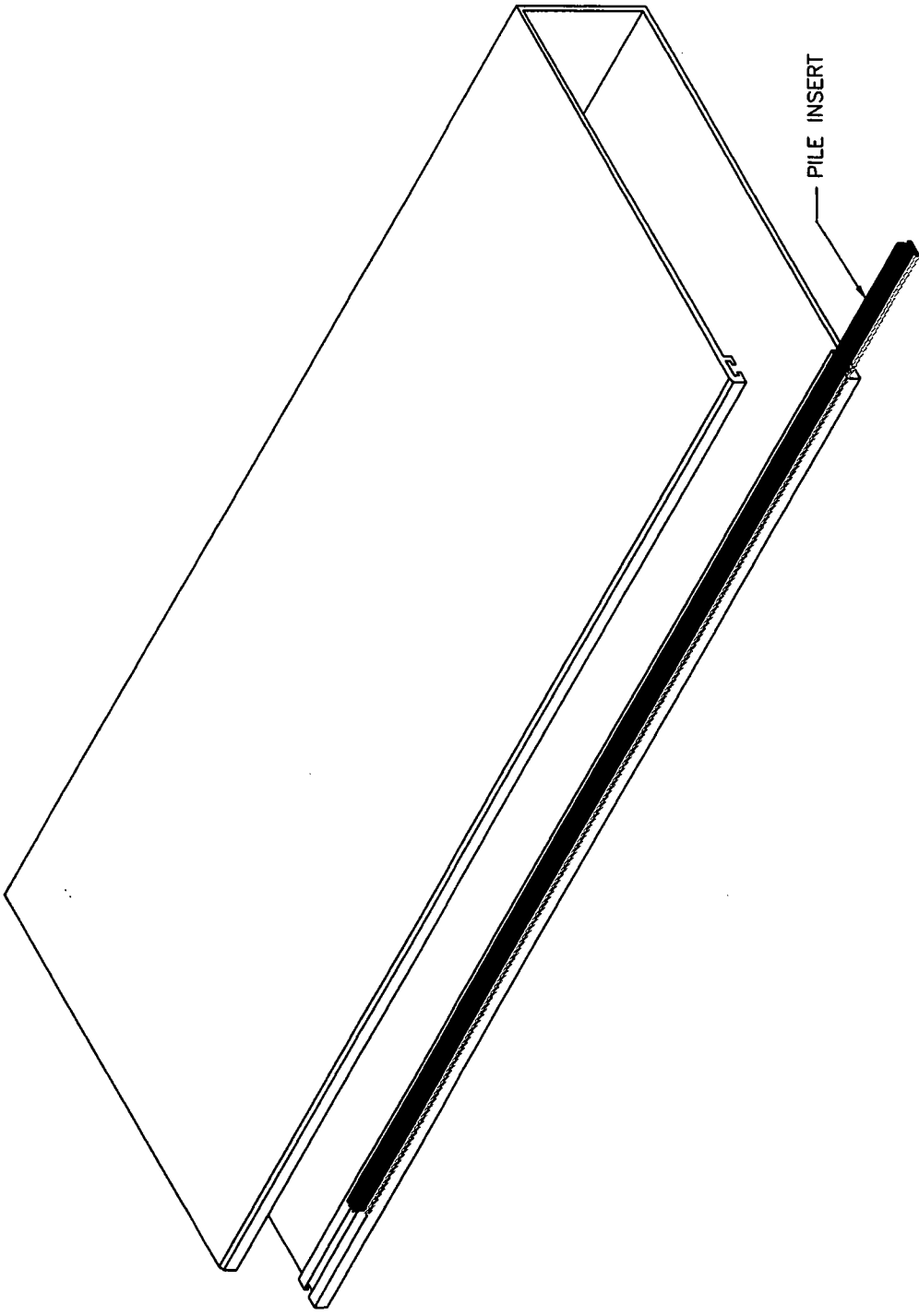
PARTS LIST	
ITEM	DESCRIPTION
1	INTERMEDIATE DRIVE WHEEL
2	SQUARE SHAFT
3	PLASTIC SPACER
4	INTERMEDIATE BRACKET

REV #	DATE	DESCRIPTION	APP'D
X			
X			
X			
X			

ACACIA CORPORATION

7 CRAWFORD ST.
 McKEES ROCKS, PA. 15136
 (412) - 771-6144

DRAWING NUMBER	SHEET	OF	REVISION
COU1	1	1	X



SIDE VIEW

REV #	DATE	DESCRIPTION	APP'D
X			
X			
X			
X			

ACACIA CORPORATION
 7 CRAWFORD ST.
 McKEES ROCKS, PA. 15136
 (412) - 771-6144

SIDE AND SILL CHANNEL

DRAWING NUMBER: **S&S01** SHEET: 1 OF 1 REVISION: X